



# Professional *Grower Supplies*





### Over Wintering Film

#### Tufflite™ InfraRed Protection

Four year covering, UV protection, and anti-drip additive that reduces condensation build-up—plus an additive that disperses light and helps delay the exit of heat from the greenhouse.

**48 x 100, 6mil**

**BERRYTES648**-42607

Min. Buy 1EA

#### TuffliteIV™ Clear Sheeting

A high-clarity, tri-layer covering for four years with UV protection and anti-dust additive.

**48 x 100, 6mil**

**BERRYT4 648**-37052    **UPC 070052051350**

Min. Buy 1EA

**56 x 100, 6mil**

**BERRYTIV656**-43227

Min. Buy 1EA

#### TuffliteIV™ White 55% Shading

A high-clarity, tri-layer covering for four years with UV protection and anti-dust additive.

**24 x 100, 6mil**

**BERRYTW624**-20379

Min. Buy 1EA

#### Tufflite™ Nursery Overwintering Film

Tri-layer covering with UV protection and anti-dust additive.

**Clear - 32 x 100, 3mil**

**BERRYNC 332X100FT**-7586

Min. Buy 1EA

**White - 28 x 100, 3mil**

**BERRY929294**-6638    **UPC 049961202573**

Min. Buy 1EA

### Infra Red Film

#### AT Films® Dura-Film® Thermax

Every grower strives to produce the best crop they can while keeping production costs to a minimum. AT Films' Dura-Film Thermax greenhouse poly combines all of these extras into one package. Superior drip control, energy savings, and bee compatibility are all packaged together to provide growers with one film at one cost. Dura-Film® Thermax is available in a selection of stock sizes and is available during certain "runs or campaigns" at predetermined widths without minimums. All other widths are considered custom product.

**48ft x 100ft**

**AT8963858**-45854

Min. Buy 1EA

**THERMAX™**  
Anti-condensate Film

### Multi Year Film

#### AT Films® Dura-Film® Super4™

Dura-Film® Super 4™ offers the best value in a 6-mil, 4-year greenhouse film with the following improved properties over AT's older generations of greenhouse coverings. Superior strength and toughness. Higher light transmission. Guaranteed longer life – 4 years. Folds up to 210% stronger. Tear strength up to 164% higher. Puncture force up to 12% higher. Advanced UV up to 33% longer life.

**48ft X 100ft**

**AT6750043**-39847    **UPC 683706500434**

Min. Buy 1EA

**SUPER4™**  
Greenhouse Film

#### RPC bpi® Dura-Film® Luminance® High Tunnel Film

This 4-year, 6-mil film is the ideal choice as an outside layer, and the perfect partner with Thermax on the inside. Luminance is a new generation, 4-year film that actually lowers greenhouse temperatures in the daytime heat. Luminance is the first greenhouse film that improves growing conditions by using controlled diffusion to influence the light reaching the plant. Luminance is designed to make more light available to plants by increasing the amount of diffused light to close to the maximum, while reducing short wave infrared radiation and enhancing useful light in the PAR range.

**32ft x 100ft**

**AT47-1803A**-40306

Min. Buy 1EA

**LUMINANCE™**  
Tunnel Film

### Other Coverings

#### Kool Ultra Ray® Liquid Shade

KOOL RAY CLASSIC is the new name, but its formula is the original KOOL RAY Ezy-Off. KOOL RAY CLASSIC is specifically designed to lower inside greenhouse temperatures during the warmer spring and summer growing seasons. Dilution Ratios: KOOL RAY is a super concentrated formula designed to be diluted with water. Standard dilution rate is 1 part KOOL RAY to 8 parts water. Ratios can be adjusted according to the grower's particular needs. Coverage: Coverage will vary according to application, applicator, and dilution ratio. Spray will normally provide the best coverage of approximately 175 square feet per gallon after dilution.

**5gal**

**CO9162105**-12428    **UPC 751983131655**

Min. Buy 1EA





# Green-tek

## Poly Carbonate

### Green-Tek® DynaGlass® (Corrugated)

DynaGlas has become an industry standard against which all other corrugated polycarbonate products for the horticulture market are compared. DynaGlas includes several products with a variety of features engineered specifically for commercial greenhouse use. In general, polycarbonate is inherently susceptible to condensate formation, especially when used to cover totally enclosed environments like greenhouses. DynaGlas Plus is made with an exclusive manufacturing process that results in the industry's first and most extensive 10-year condensate control warranty. Because effective condensate control is such a critical need for greenhouse growers, the "Plus" condensate control feature is now built-in to every DynaGlas product.

**49.6in x 12ft - Clear**

**GRTKDYNAGLASS49612-6519**

Min. Buy 1EA



### Green-Tek® Thinwall Clear ThermoGlas®

Thermaglas multi-wall polycarbonate sheets offer high light transmission, maximum impact resistance, and superior insulation. This combination yields a strong, energy efficient, and lightweight sheet that is optimum for greenhouse applications. ThermoGlas Plus products feature built-in condensation control so durable and effective it's warranted for 10 years. The result is higher light transmission and reduced moisture-related disease. ThermoGlas 8mm triple-wall polycarbonate offers excellent light transmission, while providing up to 60% more energy efficiency than glass, and 25% more efficiency than 8mm twin-wall acrylic.

**8mm - 71.25in x 9ft**

**GRTKTWIN-71.259-6719** UPC 049961978478

Min. Buy 1EA



## Multi Year Film

### Green-Tek® 4 Year Film

GT4 is produced using advanced technology, resulting in a greenhouse film that is tough and clear long lasting greenhouse film. GT4 products offer growers: Superior Strength and Toughness, Higher Light Transmission, Guaranteed Longer Life -- 4 years. GT4 offers the best value in a 6-mil, 4-year greenhouse film with the following improved properties over our older generations of greenhouse covers. Folds up to 210% stronger. Tear Strength up to 164% higher. Puncture Force up to 12% higher. Advanced UV up to 33% longer life.

**6-mil Clear Film - 24ft x 150ft**

**GRTK47-9907-27265**

Min. Buy 1EA



## Other Coverings

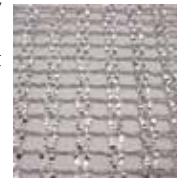
### Green-Tek® Aluminet™ "Cool Shade" Shade Cloth

Aluminet is a high quality reflective metallized HDPE knitted screen used as a greenhouse thermal screen and as an alternative to black shade cloth. It's specially treated to prevent oxidation, and: Protects against frost radiation damages. Moderates day/night temperatures. Prevents condensation build-up on screens and dripping on plants. Light weight and high elasticity.

**30% - Order by the Square Foot**

**GRTK30% ALUMINET-44**

Min. Buy 1EA



### Green-Tek® Shade Rite - Knitted Black Shade Cloth

Shade Rite knitted shade cloth from Green-Tek offers open lockstitch design for better ventilation and a reduction in wind speed and heat buildup in structures. Better ventilation and water permeable. Lightweight and easy to install. U.V. protection: U.V. resistant, high density polyethylene. Chemical resistant: resists most horticultural chemicals, sprays and detergents. Resists rips, tears and fraying. Shade levels remain constant during product life. No edge taping and minimal sewing required.

**50% Black - Order by the Square Foot**

**GRTK50% BLACK-17**

Min. Buy 1EA



## Other Coverings

### DeWitt® Woven Shade Cloth

DeWitt's® woven polypropylene shade cloth protects plants from direct sun and helps reduce water evaporation. Polypropylene shade cloth is ideal for greenhouses, outdoor display areas, or for use as a weed barrier for a variety of applications. Available in a wide range of shade percentages, DeWitt's® woven shade cloth resists tearing, puncturing, and weed penetration. UV stabilized to hold up under the most extreme solar conditions. Shade Percentages: 30%, 47%, 55%, 63%, 73% and 80%. Construction: Sewn, Double-Stitched 100% Black Polypropylene. Applications: Greenhouse, Shade Structure, Nursery, Fish Ponds, Tarpaulin/Product, Containment, Windbreak, Nursery Stock Transport Covers.

**55% Black - Order by the Square Foot**

**DEWWS55-18**

Min. Buy 1EA



## Over Wintering Film

### RKW Klerks Overwintering Film

One season UV stabilized films are available as clear or white in 3, 4, 5 & 6 mil thicknesses. White films are produced in 35%, 55%, & 70% opacities. Tri-Layer extrusion of tough copolymer resins provide needed protection to endure harsh winter environments.

**3mm White - 24ft x 150ft**

**KLOWT324150-8105**

Min. Buy 1EA

**Clear - 24ft x 150ft**

**KLOCL324100-5404**

Min. Buy 1EA



# Grower Select®

## Other Coverings

### Grower Select® Deluxe Ground Cover

Premium 22 x 11 fine weave with tucked and woven edges. Resists tearing, puncturing and weed penetration. It is approved for most government weed control applications. Ideal for greenhouses, outdoor displays and as a weed barrier for plantings without topical coverings where a weed-free environment is a must. Striped every 12in to aid in plant alignment and is UV stabilized to last even in direct sunlight.

#### 3ft x 300ft - 3.2oz

**GSSBLT3300D**-6069 UPC 042579822645

Min. Buy 1EA

#### 4ft x 300ft - 3.2oz

**GSSBLT4300D**-8092 UPC 042579822652

Min. Buy 1EA

#### 6ft x 300ft - 3.2oz

**GSSBLT6300D**-12142

Min. Buy 1EA

#### 10ft x 300ft - 3.2oz

**GSSBLT10300D**-20235

Min. Buy 1EA

#### 12ft x 300ft - 3.2oz

**GSSBLT12300D**-24281 UPC 042579822683

Min. Buy 1EA

#### 15.5ft x 300ft - 3.2oz

**GSSBLT155300D**-31363

Min. Buy 1EA



### Grower Select® Spring Lock Spring

Also referred to as wiggle wire, zippers, or zigzag wire. Works with aluminum spring lock base (GSS14498, Sold Separately) to lock single sheet of poly film down on the greenhouse.

#### 6.5ft - Sold by Bundle of 20

**GSE09560**-3814 UPC 049961986114

Min. Buy 1EA



## Other Coverings

### Warp's® Poly-Cover® Clear, 2mil Poly

All Warp's genuine poly-cover plastic sheeting is guaranteed to be full weight, full measure and thickness. Tough, for tear resistance and long life. Warp's poly-cover plastic sheeting is available in widths ranging from 4ft to 50ft and in thickness from .75 mil to 10 mil and is available in clear and sun-resistant black. Made in the U.S.A.

#### 12ft x 200ft

**WA212C**-4224 UPC 042351611207

Min. Buy 1EA

Retail \$84.99



## Other Coverings

### Mardenkro® ReduSol® Xtra Shade Coating

ReduSol has been specifically developed for applications where the coat of whitewash applied to the greenhouse must last for a whole season. It provides an attractive white, even shading coat which can be easily removed using ReduClean at the end of the season. ReduSol is exceptionally resistant to the effects of frost and rain, and is UV stabilized. ReduSol's shading effect can be adjusted according to need. A lighter shading effect can be provided in the spring, for example, than in the summer. • Optimal shading effect • Adheres to the greenhouse throughout the season • Easy to apply • Removable with ReduClean



#### 15L Pail

**MARDREDUSOL**-11492

Min. Buy 1EA

**POLY-AG. corp.**  
MANUFACTURING & MARKETING  
OF HORTICULTURAL FILMS



## Over Wintering Film

### Poly-AG SunView 1® One Year

Designed to transmit more light while maintaining superior mechanical properties. The total light transmission of the greenhouse covering is extremely important for photosynthetically active radiation, 400 - 700 nanometers. The intensity of these wave lengths in the PAR range directly influences the growth and development of the plants. These high-technology greenhouse films are based on the latest developments and technologies in the manufacturing process. Benefits: Durable, Excellent Top Layer Performance, Superior Puncture Resistance, 90% Light Transmission, Made from Latest Resin Technologies, High Clarity. Technical Features: 3-Layer Extrusion, Prime Resin Proprietary Formulation, 90% Light Transmission, 25% Light Diffusion, Dart Impact (Puncture) > 900 Grams.

#### Clear - 3mil - 32ft x 100ft

**PASV1CLR321001332**-9755

Min. Buy 1EA



### Poly-AG SunView Overwinter® Film

Overwinter films are tri-layered and specifically formulated for optimum performance related to crop response. Developed to provide protection from harsh winter climates.

#### White 70% - 3mil - 32ft x 100ft

**PASVOW321001332**-8654

Min. Buy 1EA



## Other Irrigation

### Dramm® Brass Hose Swivel

The Brass Hose Swivel is a live swivel that allows for unencumbered movement between the hose and attachments under pressure. Reduces hose twisting.



**18gpm**

**DRM1072700-1125**

Min. Buy 1EA

Retail \$15.00

### DRAMM® ColorStorm™ Custom Hose Starter Kit

Make your own hose lengths easily and quickly with our Custom Hose Starter Kit. This kit makes it easier to get started cutting your own length of hose. The kit includes the DrammPress, our easy to use hose crimper, with one set of jaws, two spools of 330' ColorStorm Hose and 12 male and 12 female fittings with ferrules - enough to make 12 hoses.



**Yellow - .625**

**DRM17626-73595**

Min. Buy 1EA

Retail \$783.84

### Dramm® Pressure Compensated Dripper

Drip irrigation system is designed for even watering with a greater range of operating pressure. Silicone diaphragms last longer. Slim, zinc-aluminum weight is easy to harvest. Durable nylon body. Available in 18in, 24in, 36in, 42in and 48in.



**2 lph Drip Assembly, 24in**

**DRMPCAS2L24-102**

Min. Buy 1EA

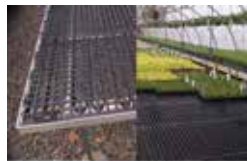
Retail \$1.02



## Greenhouse Benching

### AV Plastic Greenhouse Bench Tops

Polypropylene, UV Protected. Durable and Lightweight, No Sagging when Properly Supported. Can Withstand Extremely Cold and Hot Temperatures. Installs on any Type of Frame with Screws or Pop Rivets. Easy Interlocking Assembly. Flats, Plugs Trays and Pots Slide Easily over Surface, No Tipping. Easy to Clean and Disinfect. Will not Rust or Decay. Inorganic, Will not Support the Growth of Mold and Fungus.



**24in x 48in x 7/8in**

**AV24X48-1389**

UPC 049961977211

Min. Buy 1EA



## Irrigation Components & Tips

### Netafim™ Slimline EZ Close™ Weight Assembly

One-hand, EZ close shut-off of individual baskets - prevents water and fertilizer spillage and waste. Snag-free slim design for easy retrieval from plants at harvest - no more lost weights. 94% flow uniformity from the first basket to the last in any system. Each pre-assembled SlimLine EZ Close™ Weight assemblies include: .5gph WPCJ Dripper with built-in check valve, Super Flex UV White™ PE tubing and weight. Sold in packs of 25.



**Pre-Assembled / 18in L**

**NET40201-015402-123**

Min. Buy 1EA

Retail \$1.33

### Netafim™ VibroNet Sprinkler

Sprinkler with leak prevention device.

**Green with Check Valve - 11.7gph at 32psi**

**NET64300-005110-396**

Min. Buy 1EA

Retail \$4.30



## Greenhouse Structures

### DeCloet® Swaged Purlin Square

Square swaged purlin

**2in x 2in x 24ft 4in**

**DECLPUF-7718-7927**

Min. Buy 1EA





# GrowerSelect®



## Greenhouse Benching

### Grower Select® Ultra Plastic Top Collapsible Bench

Include all the features of our traditional benching - aluminum side rails, molded corner protectors and plastic caps on all tube ends and legs - combined with durable, smooth, non-porous plastic bench tops that allow trays, flats, and pots to slide across the surface without snagging. The polypropylene panels feature 1.1in x 2.1in rectangular holes for easy cleaning, and will not rot, crack or splinter like wood products nor corrode or rust like expanded metal or wire tops.

**4ft x 8ft**

**GSA12250-35971**

Min. Buy 1EA



## Greenhouse Structures

### Grower Select® Aluminum H-Profile 8mm

Available in 12ft sections, it is used to splice the panels on sidewalls and gables and is used in conjunction with our U-profile. Fasten to structure with wood screws or self tapping tek screws.

**Double Splice - 12ft**

**GSS13693-1467**

UPC 049961204584

Min. Buy 1EA



### Grower Select® Aluminum U-Profile 8mm

Used as a perimeter cap on sidewalls and gables and is used in conjunction with our H-profile to provide structure for polycarbonate panels. Fasten to the structures (on sidewalls and gable ends) with wood screws or self-tapping tek screws. When used as a base, weep holes should be drilled every 12in to allow the condensate to drain.

**Single Splice - 12ft - 8mm**

**GSS15102-1124**

Min. Buy 1EA



### Grower Select® Spring Lock Base

Spring lock doesn't pinch, bind, or weaken the material it secures and can be formed to the top of curved bows. It can be secured to any structural members, and can be installed around gable ends. Works by pulling the material across the channel and inserting the spring into place in the bottom channel. Can hold from 2 to 20 mil thickness and multiple layers. Requires two pieces of zigzag wire, also called zipper, wiggle wire or springlock spring (Item GSE09560) to complete the lock.

**Base Only - 12ft**

**GSS14498-1453**

UPC 049961984547

Min. Buy 1EA



## Greenhouse Structures

### Poly-Tex Flatmate Display with Casters and Purlin

Conserve your space with the narrow profile of this model yet still accommodate 15 flats of product. Galvanized steel construction. Shared end support for easy run addition. The new system is more modular than ever before, boasting universal casters, more interchangeable upper features and the ability to combine bench components from one display to another.

**73.25in W x 26.5in D x 44.5in H**

**POLTXPX7025CP-45000**

Min. Buy 1EA



### Poly-Tex Narrow Basket Hanger with Casters

Quickly move this hanging basket display outdoors and back indoors at a moments notice. This display is designed to roll through a 36-inch door and includes casters. Constructed of galvanized steel. Holds (47) 10in hanging baskets.

**72in W x 34in D x 78in H**

**POLTXBH4000-37500**

Min. Buy 1EA



**POLY-AG. corp.**  
MANUFACTURING & MARKETING  
OF HORTICULTURAL FILMS



## Greenhouse Benching

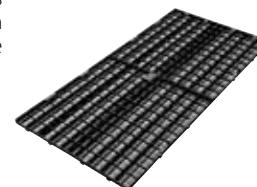
### Southwest Agri-Plastics Inc Dura-Bench Ultra

The Dura-Bench Ultra is our newest greenhouse bench top. The plastic bench top is tougher, smoother, and is a longer lasting growing surface for your plants. With increased airflow, easier installation and a lower cost per square foot, the latest Dura-Bench Ultra will fit your needs and budget. 2ft x 4ft (8sq ft., nominal) high impact abrasion resistant polypropylene plastic panel — weight 4.5lbs each. 1.1in x 2.1in rectangular holes. 2ft ends connect with a four tab and receiving hole system. 4ft sides interconnect with easy to install black nylon clips. Two pre-molded screw attachment rails and four screw attachments strips for easy installation with stainless steel screws. Dura-Bench Ultra panels allow for any combination of bench sizes. Even bench widths (2ft, 4ft, 6ft, 8ft wide) are created by laying the 4ft length of the panels down parallel to the length of the bench. Odd bench widths (3ft, 5ft, and 7ft wide) are easily created by cutting between double-ribbed center sections. Substructure frame can be made from metal, wood or pipe. Substructure frame cross supports placed on any incremental interval (such as 16in or 24in centers) based on the weight of the plants per square foot.

**24in x 48in Top**

**SWAP45-2013-1284**

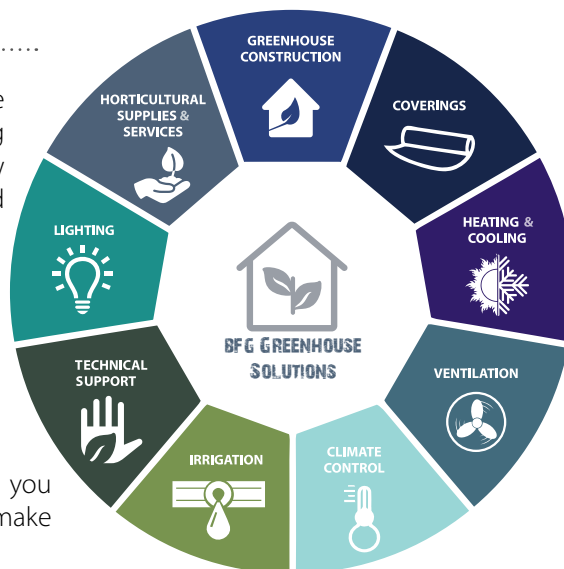
Min. Buy 1EA



# BFG Greenhouse Construction and Solutions

The BFG Greenhouse Solutions Team assists growers all across the United States with their greenhouse structure needs. Everything from the design, planning, construction and maintenance of new or existing sites, upgrades or remodels, our team is excited and ready to help! We offer a full range of products that include:

- Greenhouse Construction
- Coverings
- Heating & Cooling
- Ventilation
- Climate Control
- Irrigation
- Technical Support
- Lighting
- Horticultural Supplies & Services



Our experienced team has the technical expertise to guide you through the process and provide the information you need to make the best choice for your operation!

### Tap Into Our Resources

Our team is committed to you! Whatever wants or needs you have we are here to help and make the process as seamless as possible. Whether it's a re-cover, improving efficiencies or complete installation, we take pride in providing the resources you need.

### Over 4 Decades of Experience

With our team of dedicated professionals, BFG brings decades of experience to each project. Based on our proven success in numerous installation projects we know we can put your mind at ease.



From start to finish, we can provide you the best solutions and service available in the market.





## Customer Testimonials

### **Meadowridge Inc (Zeeland, MI)** –

“We have been building DeCloet Greenhouses with BFG for over 20 years, these strong structures are well built and able to withstand the harsh west Michigan winter conditions. DeCloet’s greenhouse design has fewer parts than most making it easier and more efficient to build. We really like the 36ft double peak with 2 roof vents per bay, we also have integrated our production and shipping space easily and efficiently using the same greenhouse frame. We look forward to using BFG and DeCloet for our future structure needs.”

- Jordan Blauwkamp

### **Darrell Norris Greenhouse (Racine, OH)**

– “Looking back, selecting BFG & DeCloet Greenhouses was one of the best decisions we made. The DeCloet Greenhouses are tough and built to withstand our climate. They go together easy and when we are ready to add more square footage their expandability is great. The BFG team is truly the best, from providing the greenhouse design to construction, furnishing the proper greenhouse equipment and last but not least plant grower expertise, BFG has the experts we need. We value our relationship and we see BFG as a partner in the supply chain of horticultural supplies, we work together and succeed together. I would recommend the BFG Greenhouse Solutions team to anyone looking for a greenhouse and horticultural supplies.”

- Darrell Norris

### **Brower Greenhouse (Hudsonville, MI)** –

“We have been building greenhouses with BFG and DeCloet since 1991, the heavy duty structure from DeCloet combined with the products and services BFG has to offer have been a winning combination for our company. Whether it’s construction or supply needs, we truly value our relationship and will continue to do business with DeCloet and BFG Supply in the years to come.”

- Kurt Brower

## Production Greenhouse



We know that time is money and we can tailor our services to meet your needs. You can spend your time focused on quality plant growth and we'll focus on building you a quality greenhouse! Our goal is to provide you a piece of mind throughout the design, planning and implementation of your project.

Whether you are looking for professional advice OR complete greenhouse solutions, BFG is at your service. Between our exclusive brands and supplier partners we have the latest structures, equipment and controls to make your production facility efficiently produce outstanding crops. In addition, our team also puts emphasis on streamlining product flow in and out of your facility to help ensure a faster return on investment.

## Retail Garden Center



BFG understands the importance when it comes to Retail Greenhouses. It's not just about having the best merchandising, it's about providing a comfortable shopping experience in a setting that is pleasant for your customers and efficient for your staff.

Our team and expertise does not stop once construction is done. BFG supplies Garden Centers nationwide with the latest and most innovative products but we all know it starts with a sound design. That is why we begin each project with the full picture in mind, from curb appeal to product flow to environmental impact. The BFG solutions team will guide you from the design stage to the day you open your doors!



# Retail Garden Centers

## Garden Centers

Our Retail Garden Center Structures are a combination of beauty and efficiency. The curb appeal alone will make an impression and attract customers but if you combine that with great ventilation and lighting you are sure to create an enjoyable and memorable shopping experience.

Extending beyond the shopping area, we take into consideration the replenishment area making sure that you have an efficient space to stage and replenish inventory. Coverings available include glass, polycarbonate, poly and steel roofing perfect for displays, warehouses, offices, utility rooms and more.



# Rimol Matterhorn

The Rimol Matterhorn stands alone as our most attractive Garden Center Structure, rugged and traditionally peaked styled gutter-connected greenhouse. The Matterhorn greenhouse is a high-quality, strong and attractive structure ideally suited for garden centers, growers and schools in any climate in North America. The Matterhorn can withstand heavy snow loads and wind loads, which means you can get a good night's sleep during even the worst winter storms. It offers different glazing options to fit your budget and presentation desires.

The Rimol Matterhorn makes an excellent choice for Garden Centers!

## Available in 20ft, 24ft & 30ft widths

- Lean-to style available in 10ft, 12ft and 15ft widths
- Typical truss spacing on 12ft centers allows for any length in an increment of 12ft
- Super easy to assemble beginning with starter column installation. Four footlong starter column is used for setting the lower section of the column, then the remaining length of column is spliced for an easy installation
- Columns with base plates available
- Columns are 4in x 4in, 13ga galvanized steel
- Non-welded trusses are quality assurance when assembled and allows for easy shipping and assembly
- Trusses consist of 2in, 15ga and 1.5in, 16ga galvanized steel
- Extra purlins near gutter provide additional snow load support in Northern climates. This prevents premature wear on polycarbonate and eliminates leaking
- 6/12 roof pitch
- Large 12ga steel gutter allows easy access to roof and downspouts. They are designed to be located anywhere in the gutter for maximum flexibility
- Can be glazed with 8mm polycarbonate, corrugated polycarbonate, polyethylene film or glass (walls only)





# Benching

Grower Select® works with some of the largest and most well-known retailers to provide them with benching that is efficient, flexible and presentable. You can no longer afford to use cement blocks and 2ft x 4ft's to produce a quality product and image. We've produced double deck benching, modular benching and benching with re-supply racks underneath. Our retail benching features complete coverage of the sharp expanded metal ends, corner protectors and plastic caps on all legs and tube ends.

Our production benches feature a 20lb/sqft load capacity and have 3/4in pre-galvanized expanded metal tops. Our special aluminum side rails completely cover all of the sharp expanded metal edges, no more torn pants with our corner protectors! We produce thousands of square feet of rolling benches every year. Our benches can be rolling or stationary, freestanding or cemented. We can usually customize to fit your needs at a very economical price.



Production  
Benching



Ultra Bench



Freestanding  
Bench

## Polytex Shade Systems & Garden Center Packages

### Permanent Retail Greenhouses

### Seasonal Retail Greenhouses

### Commercial Greenhouses

#### The Garden Mart

Designed to be a modular, low-cost, sales building for added spring plant sales. Our most popular selling model has been engineered for superior strength, easy future expansion and simplified setup. It offers protection for your plants and shopping comfort for your customers.

- Width: 21ft
- Length: 24ft-96ft (in 6ft increments)
- Sidewall height: 6ft
- Height to apex: 11ft 4in
- Frame spacing: 6ft
- Door: 6ft wide x 6ft 8in tall

#### Sun Shadow

The Sun Shadow is designed to be the simple, low-cost shade solution for your seasonal garden center. Protect your plants from the sun and provide a cool, comfortable shopping environment for your customers. The easy-to-assemble, modular design features galvanized steel construction and an extended base plate that allows you to use your palletized product for hold-down.

20ft x 20ft  
*Custom Sizes Available.*

#### Sunstopper

The Sunstopper will protect your valuable product from over exposure and windburn, while reducing water requirements. It features straightforward assembly, options for future expansion and is built tough with 2.5in x 12 gauge, galvanized steel for years of trouble free service. The Sunstopper is also offered in custom configurations to meet your existing layout.

- |             |             |             |              |               |
|-------------|-------------|-------------|--------------|---------------|
| 20ft x 20ft | 20ft x 60ft | 40ft x 60ft | 60ft x 60ft  | 100ft x 100ft |
| 20ft x 40ft | 40ft x 40ft | 40ft x 80ft | 60ft x 80ft  | 200ft x 200ft |
|             |             |             | 60ft x 100ft |               |

#### Shade W Truss

The W-Truss is a sturdy shade structure for your plants and customers. Increase customer comfort and reduce the amount of water used and time spent keeping your live product in top-selling shape. Its rugged 3in x 3in vertical posts combine with a strong horizontal truss system to give you one of the best built and most attractive shade structures on the market. It comes standard in 20ft x 20ft blocks with 30%-90% shade cloth and can be customized to fit your exact needs.

- |             |             |             |
|-------------|-------------|-------------|
| 20ft x 20ft | 40ft x 40ft | 60ft x 60ft |
| 20ft x 40ft | 40ft x 60ft | 60ft x 80ft |







### Specialty Containers

#### Al's Flower Pouch™ Grower 10 Hole Punch

Designed to maximize space and grow beautiful hanging flowers or veggies. Hang these anywhere, add life to garden fences and walls, posts, gates, railings, decks and anywhere else you find could use a little splash of color. 10 Hole Pouch for most annuals, strawberries, fall mums. Holes form two rows of five down the length of the pouch.

**21.25in L x 8.5in W, 1.59gal/6L Max Volume**

**AF000012-02-66**

Min. Buy 1EA



### Hanging Baskets

#### Belden Plastics® Saucerless Hanging Basket

Made in the U.S.A. injection molded round plastic pot with a sleek, contemporary design. Superior in quality, provide innovative grower friendly features all with 100% recycled materials. Internal disc allows for great water reservoir. So sturdy that holes can be drilled into the sides, if desired. 26in color coated, spring steel, pre-bent flexible hangers included.

**14in with 26in 4-Strand Flex Hanger - Green**

**BP690808-15843**

Min. Buy 1EA



## Grower Select®

### Decorative Planters

#### Grower Select® Beth Planter

The Beth Planters feature an artsy, modern pattern, rolled rim and washed finish. These durable planters will look great inside or out on a patio, showcasing your favorite plants.

**Silver Wash - 13.11in D x 10.24in H - Max Liquid Volume: 3.04gal**

**GSLF11012SIL-7039** UPC 049121015494

Min. Buy 1EA



#### Grower Select® Fancy Rolled Rim Planter

Decorative planter features a rolled rim, washed finish and cross-hatch patterned band. An elegant addition to any container garden.

**Black/Gold Wash - 17.75in D x 12in H - Max Liquid Volume: 7.5gal**

**GSFL1106BLKGOLD-6834** UPC 049121009325

Min. Buy 1EA



#### Grower Select® Orbit Deco Planter

These pots make an attractive addition to any outdoor container garden. A nice decorative grower's pot. Constructed of a polypropylene plastic.

**Black/Copper Wash - 12.44in D x 9.18in H - Max Liquid Vol: 3.4gal**

**GSMSL12BLKCOPPER-10081** UPC 049121001336

Min. Buy 1EA

**Black/Copper Wash - 14.06in D x 10.3in H - Max Liquid Vol: 5.5gal**

**GSMSL14BLKCOPPER-12114** UPC 049121001367

Min. Buy 1EA

#### Grower Select® Harvest Garden Square Planter

Wood-look planter with the durability of plastic.

**Mahogany - 17in D x 13.5in H - Max Liquid Volume: 8.3gal**

**GSTSD117EMA-20349** UPC 049121001589

Min. Buy 1EA



**Black/Gold Wash - 12.44in D x 9.18in H - Max Liquid Volume: 3.4gal**

**GSMSL12BLKGOLD-10081** UPC 049121001312

Min. Buy 1EA

**Black/Gold Wash - 14.06in D x 10.3in H - Max Liquid Volume: 5.5gal**

**GSMSL14BLKGOLD-12114** UPC 049121001343

Min. Buy 1EA

#### Grower Select® Kacey Planter

An elegant design makes the Kacey Planter great for indoor or outdoor use. Available in multiple wash finishes.

**Copper Wash - 15.98in D x 11.22in H - Max Liquid Volume: 4.76gal**

**GSLF1209COP-9367** UPC 049121015562

Min. Buy 1EA



**Black/Silver Wash - 12.44in D x 9.18in H - Max Liquid Volume: 3.4gal**

**GSMSL12BLKSILVER-10081** UPC 049121001329

Min. Buy 1EA

**Terra Cotta - 14.06in D x 10.3in H - Max Liquid Volume: 5.5gal**

**GSMSL14-TERRACOTTA-14301** UPC 049121009684

Min. Buy 1EA

## Hanging Baskets



### Grower Select® Combo Pot

A great pot that has the versatility to be used as a patio pot or a hanging basket! Hanger sold separately.

**White - 10.5in D x 6.75in H - Max Liquid Volume: 1.68gal**

**GS792000WH**-4650    **UPC** 049121009806

Min. Buy 1EA

**Mocha - 10.5in D x 6.75in H - Max Liquid Volume: 1.68gal**

**GS792000MO**-4650    **UPC** 049121009745

Min. Buy 1EA

**Brown - 10.5in D x 6.75in H - Max Liquid Volume: 1.68gal**

**GS792000BR**-4650    **UPC** 049121009691

Min. Buy 1EA

**Clay - 10.5in D x 6.75in H - Max Liquid Volume: 1.68gal**

**GS792000TC**-4650    **UPC** 049121009769

Min. Buy 1EA

**Green - 10.5in D x 6.75in H - Max Liquid Volume: 1.68gal**

**GS792000GR**-4650    **UPC** 049121009714

Min. Buy 1EA

**Black with Dish - 10.5in D x 6.75in H - Max Liquid Volume: 1.68gal**

**GS792000BK**-4650

Min. Buy 1EA

### Dillen™ E-10L 3- Strand Plastic Hanger (Long)

Plastic 3-strand clip hanger fits a variety of pots. Sold by 50 hangers per bag.

**Chocolate Brown 3-strand - 19.5in**

**DLNHZP3E103E21D050**-1424

Min. Buy 1EA



### Grower Select® Flat Bottom Hanging Basket

Rust-resistant, powder coated finish. For indoor or outdoor use. Features a sewn-in poly liner to retain soil moisture and includes a coco liner and wire hanger.

**Black - 16in**

**SSCC41916BK**-19523    **UPC** 049121134072

Min. Buy 1EA

**Green - 14in**

**SSCC41814HG**-16915    **UPC** 049121132641

Min. Buy 1EA



## Specialty Containers



### Grower Select® Untreated Wood Baskets

Wood packaging has been used primarily in farming for thousands of years. Since 1950, wood packaging (baskets) was the main package used to ship fresh fruits and vegetables.

**Natural - 8in x 6in**

**GSRB-002NNH**-5121

Min. Buy 1EA

**Natural - 11in x 7in**

**GSRB-001NNH**-5758    **UPC** 049121352995

Min. Buy 1EA

**Brown - 8in x 6in**

**GSRB-002BNH**-5813

Min. Buy 1EA

**Brown - 11in x 7in**

**GSRB-001BNH**-6865    **UPC** 049121352988

Min. Buy 1EA

**Natural - 14.5in x 9.425in**

**GSHBUS-N**-6644    **UPC** 049121352940

Min. Buy 1EA

### Grower Select® Little Harvey Pumpkin Cover Pot

Get ready for fall with this pumpkin cover pot; perfect for use with mum pan drop-ins.

**Orange With Face - 9.17in D x 5.9in H - Max Liquid Volume: 1.15gal**

**GSHHLITTLEHARV9**-17125    **UPC** 049121003033

Min. Buy 1EA





PÖPPELMANN

### Nursery Containers

#### Landmark® Nursery Pot

Injection-molded nursery containers that are stackable, sturdy and smooth. Features Maxi-Grow™ Plus Rim-Lok bottoms that allow secure, easy stacking and transport and tag locks in the rim to help growers clearly and securely identify plants. The Smooth sidewalls allow compatibility with automated labeling and printing equipment.

**Trade 1 Gallon - 6.13in W x 6.87in H**

**LNDI-NCTGALBK-3291**

Min. Buy 1EA



#### Nursery Supplies® Blow-Molded Custom™ Trade Pot

An economy line of blow-molded containers. These containers are designed to get your plants to market efficiently. Durable, flexible and easy on the budget.

**400CU - Trade #1 - Round - Black - Sold by 92/ cs 70cs/pl - 7 3/4in D X 7in H - 1gal 4qt (3.79L)**

**NS01-00300-0900-3782**

**UPC 710895093260**

Min. Buy 1EA



#### Nursery Supplies® Classic Custom™ Blow-Molded Trade Pot - Economy Line

An economy line of blow-molded containers. These containers are designed to get your plants to market efficiently. Durable, flexible and easy on the budget.

**600CU - Trade #2 Round - Black - Sold by 105/ cs 50cs/pl - 9in D X 8 1/2in H - 1.5gal 6qt (5.68L)**

**NS01-00450-1381-5121**

**UPC 710895092966**

Min. Buy 1EA



### Hanging Baskets

#### Pöppelmann TEKU® Hanging Basket With Hanger

Rapid growth, healthy plants, outstanding machinability – Pöppelmann TEKU® is not only characterised by the leading product range, but also offers the optimal solution for your culture. Water overflow with tag lock. Includes compatible hanger.

**Lime - 10.625in x 6.5in**

**PPMAL27ZCOMBOLIME-6777**

Min. Buy 1EA



### Injection Molded Containers

#### Pöppelmann TEKU® Decorative Container w/ Tag Slot

Fast watering and drainage and optimum pot machine properties – these small details are often what makes a big difference. In other words: precision work. This is a decisive factor for the quality of the TEKU® plant pots. And it's the decisive factor for something else: your success. Has a cross bottom.

**Purple - 7in x 6in**

**PPPDB18PURPLE-18213**

Min. Buy 1EA

**Yellow - 7in x 6in**

**PPPDB18YELLOW-18571**

Min. Buy 1EA



### Injection Molded Containers

#### T.O. Plastics 2.5in Deep Pot

100% recycled resins that are extruded, then formed into high-impact polystyrene square plant pots. Durable, dependable and environmentally responsible plant pots with the efficiency of our Press-Fill system.

**SVD250 - Square - Black - Sold by 800 Per Case - 48 Cases per Pallet - 2.6in D x 3.44in H - 7.84oz (232ml) - Thermoformed**

**TO700003C-4308**

Min. Buy 1EA



#### T.O. Plastics 3.5in Deep Pot

100% recycled resins that are extruded, then formed into high-impact polystyrene square plant pots. Durable, dependable and environmentally responsible plant pots with the efficiency of our Press-Fill system.

**SVD350 - Square - Black - Sold by 450 Per Case - 48 Cases per Pallet - 3.52in D x 3.5in H - 1.08pt (515ml) - Thermoformed**

**TO700026C-4016**

Min. Buy 1EA



### Pots & Carry Trays

#### T.O. Plastics 4.5in Traditional Pot

100% recycled resins that are extruded, then formed into high-impact polystyrene square plant pots. Durable, dependable and environmentally responsible plant pots with the efficiency of our Press-Fill system.

**SVT450 - Square - Black - Sold by 375 Per Case - 28 Cases per Pallet - 4.2in D x 3.62in H - 1.72pt (815ml) - Thermoformed**

**TO700087C-4382**

Min. Buy 1EA







# The HC Companies

Leader in Horticultural Containers

## Fiber Containers

### Dillen® Fiber Grow Bio Based Carry Tray

Biodegradable alternative to using plastic.

10ct

ITMLFCT10400RBRD010-1321

Min. Buy 1EA



### Dillen® FiberGrow® Beehive Hanging Baskets

Natural and biodegradable. Manufactured using recycled materials. These basket provides season-long durability in moist and humid growing conditions. WaxTough fortified with a aesthetically pleasing, rich, dark, earth tone color. FiberGrow® insulates roots from extreme variations in temperature. An easy to assemble, attractive and cost effective alternative to coco or moss.

12in

ITMLFHE12000WAXD012GR-4805

Min. Buy 1EA



### Dillen® FiberGrow® Rose Thinwall Pot (Round)

Superior Growing Containers that breathe like clay, improve aeration and promote healthier root systems by insulating them from temperature fluctuations. Attractive FiberGrow Planters enhance patios, pools and garden settings.

8.25in x 8.75in Nursery Pot

ITMLFNP08090RBRD040TW-3371

Min. Buy 1EA



## Coextruded Containers

### Dillen® Mum Pan (Round)

Co-extruded with single color layering with a dark interior for maximum root protection from light. Lightweight, yet durable polypropylene for greater cost efficiency. Multi-level drain holes for efficient drainage. Strong rims for efficient use in high-speed automated systems. The colored exterior can be customized by offset printing to create immediate brand recognition.



Terracotta/Terracotta - 9in D x 6.25in H - Max Liquid Volume: 1.2gal

DLNXAM09001E24C090-3995

Min. Buy 1EA

## Decorative Planters

### Dillen® Centabella Planter

Classic, fluted design that fits most any setting. Features an extra wide base for stability, sturdy heavy rim and a dual-drain bottom for root aeration and increased airflow. De-nests easily. Engineered for high-volume production in commercial growing applications.

Metallic Cranberry - 12.5in D x 9.5in H - Max Liquid Volume: 3.25gal

DLNCBU12500H06C024-6247

Min. Buy 1EA

Moroccan Bronze (BFG Exclusive!) - 12.5in D x 9.5in H - Max Liquid Volume: 3.25gal

DLNCBU12500H02C024-6247

Min. Buy 1EA



## Hanging Baskets

### Dillen® E-10L 3- Strand Plastic Hanger (Long)

Plastic 3-strand clip hanger fits a variety of pots. Sold by 50 hangers per bag.

Clay 3-strand - 19.5in

DLNHZP3E103E22D050-1424

Min. Buy 1EA

Green 3-strand - 19.5in

DLNHZP3E103B66D050-1424

Min. Buy 1EA

Mocha 3-strand - 19.5in

DLNHZP3E103E32D050-1424

Min. Buy 1EA

White 3-strand - 19.5in

DLNHZP3E103A10D050-1424

Min. Buy 1EA



### Dillen® Euro Series Hanging Basket

Renowned for its stylish swirled design, saucerless hanging basket. Hangers sold separately.

White - 11.75in D x 7.25in H - Max Liquid Volume: 2.39gal

DLNHSI12000A101050-12315

Min. Buy 1EA



### Dillen® Traditional Hanging Baskets

Traditional and classic design. Includes inside divider, featuring center drain with water reservoir. Greater soil volume for larger plants.

Green - 12in D x 7.12in H - Max Liquid Volume: 2.21gal

DLNHTI12000B661050-15371

Min. Buy 1EA





# The HC Companies®

Leader in Horticultural Containers

## Injection Molded Containers

### Dillen® Deep Press Fit Pot (Square)

Co-extruded with dual color layering with a dark interior for maximum root protection from light. Lightweight, yet durable polypropylene for greater cost efficiency. Multi-level drain holes for efficient drainage. Strong rims for efficient use in high-speed automated systems.

**Black - 4.12in D x 3.62in H - Max Liquid Volume: 1.65pt**

**DLNSVP04501G18C375-5456**

Min. Buy 1EA



### Dillen® Geranium Thinwall Pot (Round - Offset Print Option Compatible)

Made from high-grade polypropylene. Bulk packaging available for most sizes, making shipping and storage more efficient and providing additional savings to the grower. Various sizes are created and customizable with offset printing capabilities.

**Green - 4.5in D x 3.81in H - Max Liquid Volume: 1.26pt**

**DLNSTG04500B66C850-12056**

Min. Buy 1EA



## Trays, Inserts & Flats

### Dillen® Standard Open Web Carry Tray

Specially designed to accommodate automation equipment.

**Black**

**DLNTWA10206G18D050-3182**

Min. Buy 1EA



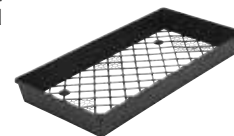
### Dillen® Standard Open Web Carry Tray (Medium Weight)

Injection flats deliver increased flexibility and are economically constructed using quality, blended, recycled raw material with additives. Designed for consistent performance in automated filling and handling equipment.

**Black - 21.125in L x 10.5in W x 2.5in H**

**DLNTWA10201G18D050-4816**

Min. Buy 1EA



### Dillen® True Series Open Web Carry Tray (Light Weight)

Injection flats deliver increased flexibility and are economically constructed using quality, blended, recycled raw material with additives. Designed for consistent performance in automated filling and handling equipment.

**Black - 20in L x 10in W x 2.5in H**

**DLNTWT10201G18D050-3175**

Min. Buy 1EA



## Fiber Containers

### Western Pulp® Round Fiber Hanging Basket

Interior: 13.75in(34.9cm) Top Diam, 8.5in(21.5cm) Bottom Diam, 8.375in(21.2cm) H, 3.96Gal Capacity (15.0L). Baskets Are Fully Wax-Permeated For Extended Life And Strength, Fitted With Attractive Rust-Free Eyelets. Largest Round Standard Basket. Heavy-Duty Wire Hanger Recommended, Sold Separately.

**14XL -Interior: diameter 13.75in(34.9cm) top, 8.5in(21.5cm) bottom, height 8.375in(21.2cm), 3.96 gallon capacity**

**WP107127-16727**

Min. Buy 1EA





Science For A Better Life

**Fungicides & Bactericides**

**Trinity® TR Fungicide**

Provides broad spectrum control of several key diseases. For use in greenhouses on bedding plants, cut flowers, flowering hanging baskets, foliage, potted flowering plants, ornamentals and perennials.

**3oz**  
**BAS59012781**-4730  
Min. Buy 1EA



**Insecticides & Miticides**

**Forbid® 4F Miticide**

Offers outstanding knockdown and residual control of mites and all stages of whiteflies for four to eight weeks. Excellent translaminar activity for easier coverage and has minimal effects on beneficial insects when used according to label directions.

**8oz**  
**PROKZ19-0522W**-36633  
Min. Buy 1EA

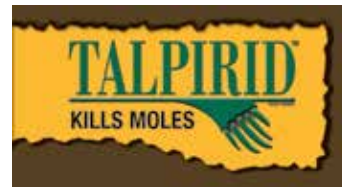


**Insecticides & Miticides**

**Attain® TR Insecticide**

A ready-to-use, ultra-low-volume insecticide fogger that controls a variety of greenhouse insect pests, including aphids, fungus gnats, mealybugs, mites, thrips and whiteflies, along with several other secondary insect pests.

**2oz**  
**BAS59011825**-3189    **UPC 804338118259**  
Min. Buy 1EA



**Animal Repellents and Controls**

**Talpirid Mole Worms**

A worm-shaped mole bait that kills moles in lawns and gardens. Moles usually die in their tunnels, often within 12-24 hours of ingesting the bait.

**20pk**  
**BLI7150**-4000    **UPC 030835400614**  
Min. Buy 1EA



**Beethoven® TR Miticide / Insecticide**

Beethoven TR provides control of mites including two-spotted spider mites and suppresses whiteflies. Beethoven offers quick and easy application, thorough coverage and excellent plant safety.

**2oz**  
**BAS5902321**-3225    **UPC 804338123215**  
Min. Buy 1EA



**Pylon® TR Miticide / Insecticide**

A broad-spectrum miticide / insecticide that provides control of mites, thrips and adult fungus gnats. Controls the target insect or mite by interfering with energy production of the pests. Its translaminar movement and mode of action results in mortality of most pests in 72 hours. Easy to use total release fogger for enclosed areas including greenhouses, shade houses and truck trailers.

**2oz**  
**BAS59012595**-3301  
Min. Buy 1EA



**Pyrethrum® TR Insecticide**

Total release insecticide fogger for indoor use in Garden Centers, Greenhouses and Nurseries. Fast and easy control of many pests including Aphids, Beetles, Fungus Gnats, Caterpillars and many more. For use on ornamentals, flowering plants, vegetables, hanging baskets, bedding plants and more.

**2oz**  
**BAS59011861**-3009    **UPC 804338118617**  
Min. Buy 1EA







### Fungicides & Bactericides

#### ZeroTol® 2.0 Fungicide / Bactericide

An effective broad spectrum bactericide / fungicide that increases plant health by killing algae, bacteria, fungi and their spores on contact. Labeled for edibles and greenhouse food crops and can also be used on ornamentals, turfs and landscapes. Controls foliar and root diseases and is safe to use on foliage and most open blooms. Leaves no harmful residue behind and has Zero REI. Can be applied as a foliar spray or drench.

**2.5gal**

**BSF600025**-14999    **UPC** 188716000061

Min. Buy 1EA



### Fungicides & Bactericides

#### RootShield® Plus WP Biofungicide

RootShield Plus biological fungicide formulated as wettable powder for drench or dip. RootShield Plus grows on roots, shielding them against fungi. Two active ingredients for enhanced disease control. One application protects for up to 12 weeks.

**1lb**

**BW2HR45A02**-16374

Min. Buy 1EA

**3lb**

**BW2HR45A03**-36053

Min. Buy 1EA



#### ZeroTol® HC Hydro

ZeroTol HC's blend of two active ingredients quickly eliminates plant pathogens such as Powdery Mildew, Botrytis and Pythium. The 1-gallon container is perfect for the indoor or hydroponics grower with a growing space of 500 sq. ft. or less. Can be used as a foliar spray, hard surface treatment, and in hydroponics and aquaponics systems.

**1gal**

**BSF62001**-4444

Min. Buy 1EA



### Insecticides & Miticides

#### BotaniGard® 22WP Mycoinsecticide

BotaniGard 22WP is a mycoinsecticide for the control of Whitefly, Aphids, Thrips and more. Labeled for use on ornamentals and vegetables in greenhouses, nurseries, commercial landscapes, interiorscapes and turf. Wettable powder formulation.

**1lb**

**BW1B15A02**-10663    **UPC** 049961998780

Min. Buy 1EA



### Fungicides

#### Eagle® 20EW Fungicide

Systemic protectant fungicide for use on ornamentals in greenhouses, nurseries and landscapes as well as turf and golf applications. Controls key diseases like powdery mildew, rust, scab and anthracnose.

**16oz**

**DOW173917**-4453

Min. Buy 1EA



### Plant Growth Regulators

#### Dip 'N Grow® Rooting Hormone

Dip 'N Grow liquid rooting hormone for rooting new plants from cuttings. Easy to use liquid formulation.

**1pt**

**DIPNDG01612**-5186    **UPC** 810455006010

Min. Buy 1EA

**1gal**

**DIPNDG12804**-30037    **UPC** 725609128015

Min. Buy 1EA





**Insecticides & Miticides**

**Talstar® Professional Insecticide**

Controls pests indoors and outdoors on residential, commercial and industrial buildings, greenhouses, lawns, ornamentals and more. Talstar Pro Insecticide provides broad-spectrum control of the toughest lawn and ornamental pests. Not labeled for outdoor nursery applications

**32oz**  
**FMC19-0303F**-5364  
Min. Buy 1EA



**Herbicides**

**Lebanon® Woodace® Preen Plus®**

Combines the power of two active ingredients (Trifluralin and Isoxaben) for unsurpassed control of both grassy and broadleaf weeds. One application can prevent over 150 weeds from invading shrub beds and other landscape areas for up to eight months.

**20lbs**  
**WO2456320**-5320    **UPC** 088685563201  
Min. Buy 1EA



**Animal Repellents and Controls**

**DeerPro® Spring/Summer Animal Repellent**

DeerPro animal repellent reduces browsing and chewing damage from deer, rabbits, and voles. One application will protect treated plants from 3 to 6 weeks.

**2.5gal**  
**DP44320**-19750  
Min. Buy 1EA



**DeerPro® Winter Animal Repellent**

DeerPro animal repellent is a long lasting solution to winter foraging animals. Can be applied as early as October and it will still be protecting shrubs and trees in early spring. Reduces browsing and chewing damage from deer, rabbits, and voles.

**2.5gal**  
**DP44318**-16250  
Min. Buy 1EA



**Fungicides & Bactericides**

**Thymox® Control™ Fungicide-bactericide**

Control a broad range of fungal and bacterial diseases such as grey mold, powdery mildew and fireblight on all crops. Thyme oil efficacy is powered by an innovative nano emulsion technology that delivers billions of nano-size droplets of the antimicrobial oil for superior contact with the pathogen and higher mortality. Kill through pathogen's cell membrane disruption. No known resistance to pesticides. Emulsifiable concentrate. Recommended application rate: 0.5%. Foliar spray.

**1gal**  
**KEM018155**-18200  
Min. Buy 1EA



**Insecticides & Miticides**

**TetraCURB™ Concentrate Miticide-insecticide**

Kills and repels mites and small soft-bodied insects such as two-spotted spider mites, aphids, whiteflies, thrips, lygus or mealybugs. Labeled for use on all crops. Controls all pest life stages. Emulsifiable concentrate, smart blend of soap and emulsifier for greater spread, efficacy and minimal phytotoxicity. Recommended application rate: 64 fl. oz./100 gal water. Foliar spray.

**1gal**  
**KEM018139GL**-20370  
Min. Buy 1EA





### Fungicides & Bactericides

#### Regalia® CG Fungicide / Bactericide

Regalia's unique mode of action of Induced Systemic Resistance (ISR) brings a sustainable option to help simplify and extend your IPM program. It can be used as a stand-alone product, in rotation with or in combination with other fungicides to strengthen IPM programs and to help manage resistance in organic & conventional crops, and turf and ornamentals. Regalia also improves the crop's tolerance to stress by enhancing overall plant health.

**1qt**

**MB10084**-4453

Min. Buy 1EA

**1gal**

**MB10081**-14722

Min. Buy 1EA



### Insecticides & Miticides

#### Grandevo® CG Insecticide / Miticide

Grandevo® is a microbial-based insecticide. Grandevo contains several active compounds that repel, stop feeding, reduce reproduction and induce mortality to prevent the development of damaging populations of sucking and chewing insects, flies and mites. Grandevo can be used on a wide range of organic and conventional crops, including fruits, vegetables, nuts and turf and ornamentals.

**1lb**

**MB10085**-3829

Min. Buy 1EA

**1qt**

**MB10086**-5036

Min. Buy 1EA

**1gal**

**MB10083**-16722

Min. Buy 1EA



### Animal Repellents & Controls

#### Hawk® All-Weather Rodent Bait Chunx

Made with bromadiolone, Hawk is a single-feed anticoagulant rodenticide with Patented gnawing edges. Use with confidence for unsurpassed control, even against warfarin resistant "super-rats." The superior formulation is irresistible to rats and mice and kills them in 4 or 5 days after eating just a single-feeding. Highly weatherable.

**9lb Pail**

**MT0312705**-7188    **UPC** 048745312705

Min. Buy 1EA

**150 x 1.5oz Place Packs**

**MT0311654**-11088

Min. Buy 1EA



#### Rampage® Rodent Bait Chunx

Rampage is a key component in the fight against resistance as it contains Bromethalin, a non-anticoagulant capable of killing even anticoagulant resistant rats and mice. It delivers a proven combination of bait acceptance and speed of kill. In fact its formula can kill rodents in as little as two days after consuming a toxic dose. Using Rampage also reduces the amount of bait required for control since rodents ingesting a toxic dose may not feed again.

**9lb Pail**

**MT0222912**-18024

Min. Buy 1EA

**121 x 15g Place Packs**

**MT0221212**-9493

Min. Buy 1EA



## Neogen® Corporation



### Animal Repellents & Controls

#### Ramik® Green Rodenticide

A diphacinone anticoagulant rodenticide. Excellent rodent palatability and weather resistant packaging.

**45 x 43g Packets**

**NGN116316**-3357

Min. Buy 1EA



### Insecticides & Miticides

#### Floramite® SC/LS Miticide

Produces quick knockdown through contact activity and long residual control of more than 21 days. Soft on predacious mites and beneficial insects. Provides outstanding control of a variety of mite pests on ornamental plants. Labeled for interiorscapes, landscapes and residential (not for plants grown for resale).

**8oz**

**OHP982714**-13200

Min. Buy 1EA







# MONSANTO



### Insecticides & Miticides

#### PyGanic® Specialty Insecticide

Pyganic Specialty is a professional botanical insecticide that rapidly knocks down and kills pests in greenhouses and nurseries. Labeled for use on ornamental plants, vegetables, fruit and nut trees.

**1qt**

**MGK7444-D30A**-22756

Min. Buy 1EA



### Herbicides

#### Ranger Pro® Herbicide

Ranger Pro is a post-emergent systemic herbicide with no residual soil activity. Ranger Pro provides broad spectrum control of many annual and perennial weeds, woody brush and trees. 41% Glyphosate with surfactant.

**2.5gal**

**MON339020**-6696

UPC 021225094150

Min. Buy 1EA



### Mycorrhizae & Soil Inoculants

#### MycoApply Injector Endo

MycoApply Injector Endo is a suspendable powder mycorrhizal inoculum consisting of 4 species of endomycorrhizal fungi. Formulated for use with horticulture injector dosing equipment. These beneficial fungi greatly increase the effective rooting area of plants, thereby enhancing plant growth, vigor, and tolerance of environmental extremes.

**100gr**

**MAAS1011504455**-28435

Min. Buy 1EA



#### Roundup ProMax® Herbicide

Roundup ProMax® controls a broad spectrum of weeds with virtually no re-growth. The surfactant system of Roundup PROMAX allows the solution to penetrate weed leaf surfaces faster, which means it is rain fast in half the time of Roundup PRO®. Roundup ProMax® has a concentrated potassium salt formulation, so one gallon of Roundup ProMax® contains the glyphosate equivalent of 6 quarts of Roundup PRO®.

**1.67gal**

**MON19-1058A**-8730

UPC 070183596090

Min. Buy 1EA



#### MycoApply® Soluble MAXX

MycoApply Soluble Maxx is a suspendable powder mycorrhizal inoculum consisting of 9 species of endomycorrhizal fungi and 10 species of ectomycorrhizal fungi. These beneficial fungi greatly increase the effective rooting area of plants, thereby enhancing plant growth, vigor, and tolerance of environmental extremes.

**1lb**

**MAFMASOLMX10**-3602

Min. Buy 1EA



#### Roundup QuikPRO™ Herbicide

Roundup QuikPro is a post-emergent systemic herbicide with no residual soil activity. Roundup Pro provides broad spectrum control of many annual and perennial weeds, woody brush and trees. 73% Glyphosate with Diquat and surfactant. Rainfast in one hour.

**6.8lb**

**MONCH362**-11252

UPC 070183297054

Min. Buy 1EA

**5 x 1.5oz Pack**

**MON88603**-1341

UPC 008358070390

Min. Buy 1EA



#### MycoApply® Ultrafine Endo / Ecto

MycoApply Ultrafine Endo/Ecto is a suspendable powder mycorrhizal inoculum consisting of 4 species of endomycorrhizal fungi and 7 species of ectomycorrhizal fungi. These beneficial fungi greatly increase the effective rooting area of plants, thereby enhancing plant growth, vigor and tolerance of environmental extremes. OMRI Listed. Bullet Points: 4 species Endomycorrhizae, Glomus intraradices, Glomus mosseae, Glomus aggregatum, Glomus etunicatum, 130,000 Endomycorrhizal Propagules per lb., 7 species Ectomycorrhizae, Rhizopogon villosulus, Rhizopogon luteolus, Rhizopogon amylopogon, Rhizopogon fulvigleba, Pisolithus tinctorius, Scleroderma cepa, Scleroderma citrinum, 110 million Ectomycorrhizal Propagules per lb.

**1lb**

**MAAS1050204455**-2780

Min. Buy 1EA





### Mycorrhizae & Soil Inoculants

#### Sustane® Bolster® MycoBio™

Bolster® MycoBio™ is a blend of endo mycorrhizae species and beneficial bacteria, with humic acid and compost to support the proliferation of soil microorganisms. Bolster® MycoBio™ is used for inoculating soils and growing media with beneficial microbiology for improved nutrient cycling and to amend soil to improve seedling success and promote vigorous plant establishment.

##### 1lb (12/cs) Case Only

SNF60606061-708

Min. Buy 1EA

##### 6lb (4/cs) Case Only

SNF60606065-4572

Min. Buy 1EA

##### 50lb (40/pl)

SNF60606060-25714

Min. Buy 1EA



### Fungicides & Bactericides

#### Subdue MAXX® Fungicide

Subdue MAXX is a systemic fungicide that provides control of damping off, root and stem diseases caused by Pythium and Phytophthora as well as foliar diseases including Downy Mildew. Labeled for use on ornamentals, foliar and flowering plants, non bearing fruit and nut trees and landscapes and interiorscapes.

##### 32oz

CH149-25133

Min. Buy 1EA



### Herbicides

#### Tenacity® Herbicide

Manage weeds, both broadleaves and grasses, without limiting other key aspects of turf management. Systemic, selective pre- and post-emergence herbicide. Safe on established and newly seeded turf. Controls 46 broadleaf weed and grass species and kills crabgrass.

##### 8oz

SYN46256-10036

Min. Buy 1EA



# VESTARON™

THE POWER OF PEPTIDES

### Insecticides & Miticides

#### Spear-T® Insecticide / Miticide

Spear-T® Liquid Concentrate is a biological insecticide/miticide for treatment of thrips, whiteflies, two spotted spider mites, broad mites and aphids in vegetables in greenhouses. It features a new mode of action, environmentally friendly, safe for honeybees. Can be sprayed or fogged, labeled for greenhouse use only.

##### 1gal

VESBT128-6800

Min. Buy 1EA



### Insecticides & Miticides

#### Avid® .15EC Miticide / Insecticide

For control of leaf miners and mites and suppression of aphids, whiteflies and thrips on ornamental plants. Rain fast within hours of application, offering outdoor application flexibility and is odorless. Also leaves no unsightly residue on plants.

##### 8oz

SYN25873-12714

Min. Buy 1EA





### Other Equipment

#### Bluelab® Combo Meter

A convenient and portable solution pH, conductivity, and temperature meter all in one. Easy to read screen and push button operation, choose your preferred parameter to display. Portable with no external power supply required, this meter can be used anytime and anywhere to help manage your plant's daily nutrient requirements. Team with Bluelab® solutions and the convenient Bluelab® Carry Case. Features: · Replaceable double junction pH probe included · Shows conductivity scales CF, EC, PPM 500 & PPM 700 at the touch of a button · Lightweight and portable · Large easy to read, backlit LCD display · No calibration required for conductivity and temperature (factory calibrated) · Simple two point pH calibration process with 30 day calibration indicator · Over range and under range indicators · Low battery indicator · 2x AAA alkaline batteries included · Auto off function



**Probe cable length: 2 meters / 6.5 feet**

**BLBMETCOM-18600** UPC 942102492003  
Min. Buy 1EA Retail \$308.00

#### Bluelab® Guardian Monitor

Monitoring your crops 24 hours a day, with the ability to set high and low alarms for each parameter. A flashing display lets you know if your parameters move away from the optimum, allowing you to make the important adjustments quickly and effectively. The large, clear display allows readings to be viewed from a distance. The Bluelab® Guardian Monitor is mains powered and is either mounted to the wall or hung on a support and probes positioned inside your reservoir / solution. Features: · Wall mount for continuous viewing · Plant-safe green LEDs, with adjustable brightness · Large easy to read displays · Replaceable double junction pH probe included · Easy to navigate menu to program & adjust settings · Selectable conductivity and temperature scales · No calibration required for conductivity and temperature · Simple push button pH calibration · Flashing high and low alarms (non-audible) · Built with greater tolerance to RF / electronic interference · International power supply · Non-volatile memory



**Probe cable length: 2 meters / 6.5 feet**

**BLBMONGUA-24800** UPC 942102492008  
Min. Buy 1EA Retail \$411.00

#### Bluelab® pH Pen

The preferred option for hand held pH meters. It provides a compact, quick and handy way to manage the success of your crops to ensure maximum uptake of nutrients. A key parameter that affects nutrient uptake is whether your solution is acid or alkaline. This is measured in the pH. Teamed with the Bluelab® Conductivity Pen you have a robust, convenient and accurate measurement system. Features: · Measures pH and temperature · Selectable units for temperature · Fully waterproof · Backlit LCD display · Double junction probe (not replaceable) · Simple two point calibration process with 30 day calibration indicator · Hold reading function · Low battery indicator · Auto off function · Automatic temperature compensation · 1 AAA replaceable battery included



**BLBPENPH-7100** UPC 942102492023  
Min. Buy 1EA Retail \$116.00



## DOSATRON®

WATER POWERED DOSING TECHNOLOGY

### Fertilizer Injectors

#### Dosatron® Injector

Non-electrical proportional injector provides the perfect solution for: fertilizers, insecticides, fungicides, algicides, acids, wetting agents, disinfectants, spraying. This water activated injector includes: Mounting bracket, suction hose, weighted strainer and quick start guide.



**6.3125in x 19.125in - 14gpm**

**DOSATD14M2ZVFII-46200** UPC 049961983212  
Min. Buy 1EA

#### Dosatron® Injector

Non-electrical proportional injector provides the perfect solution for: fertilizers, insecticides, fungicides, algicides, acids, wetting agents, disinfectants, spraying. This water activated injector includes: Set of legs, manual bypass, suction hose, weighted strainer, vacuum breaker and operating manual.



**15ft x 42ft without Legs. 15ft x 55ft with Legs. 100gpm. Pipe Size: 2in NPT Thread**

**DOSATD20SVFII-268883** UPC 049961971301  
Min. Buy 1EA

#### Dosatron® Li'l Bud-D

Portable fertilization system is perfect for spot treatments. Includes 5gal bucket with lid. Accommodates the 7, 11, and 14gpm injectors. Injector and hook-up kit sold separately.



**22in D x 19in W x 44 1/2 H. Tank Size: 5gal. Tire Size: 10in No-flat**

**DOSATHS15-5-29697**  
Min. Buy 1EA Retail \$296.97



SYMBOL OF QUALITY

ACME ENGINEERING & MANUFACTURING CORP.

### Greenhouse Ventilation

#### ACME Ventilation Motorized Shutter Motor & Linkage

Shutter motor for single and double panel shutter. Includes motor, mounting bracket, cam assembly, retainer spring and hardware.

**Model #316675C**

**ACME316675C-17000**  
Min. Buy 1EA



# DRAMM

## Greenhouse Ventilation

### Dramm® Horizontal Air Flow System

The Dramm AME Horizontal Air Flow (HAF) Fans offer efficiency, flexibility, and simplicity. Utilizing an aerodynamic design and a high-efficiency motor, the AME fan is equipped to maximize the air flow potential of any situation. When combined with speed controllers, the AME Fans offer unmatched flexibility in air flow as plants grow and mature. Because of their shrouded, aerodynamic design and high-efficiency motor, Air Movement Efficiency (AME) fans cover greater distances with better, more even air speeds. The AME Fan design provides leverage for air movement. The result is not only increased forward propulsion but a pull from behind the fan as well.

**400mm**

**DRM400-51457**

Min. Buy 1EA



# Green-tek

## Fertilizer Injectors

### Dosmatic® Chemilizer Injector

An industry-leading chemical injector that utilizes years of proven diaphragm technology. Powered by the existing water supply, the internal motor drives the chemical pump, injecting very precise amounts of chemical. The speed of the water motor and pump is proportional to the water flow, ensuring Chemilizer will inject consistent amounts of chemical regardless of fluctuation in water pressure and flow.

**CH9000-AV2 / 3-85psi Operating Pressure, 0.02 - 11GPM Flow Rate, 50:1 - 164:1 (0.6 - 2.0%)**

**Injection Rate**

**DOSMCH9000AV2-34080**

Min. Buy 1EA



### Dosmatic™ Advantage 30 Injector

The Advantage 30 operates without electricity to precisely inject liquid concentrates into a water supply line using fluid flow as the power source. Features: chemicals are thoroughly mixed before output, ratio easily adjustable and composite body construction.

**2.5% - 30gpm**

**DOSMSPV0182-66514**

Min. Buy 1EA



# MODINE

APPLIED THERMAL INNOVATION™

## Greenhouse Heaters

### Modine Effinity™ High Efficiency Natural Gas Heater

At 93% thermal efficiency, Modine's Effinity93® condensing unit heater features the highest efficiency available in North America for gas-fired unit heaters. This industry leading efficiency is a result of the coupling of the Conservicore® secondary heat exchanger technology with robust tubular primary heat exchanger design. The Conservicore® technology features a secondary recuperative heat exchanger fabricated from AL29-4C® stainless steel. This material is superior to other lower grades of stainless steel and aluminum, resulting in outstanding ability to withstand the corrosive environment of condensing gas fired equipment. The separated combustion units draw combustion air from outside to ensure that the unit will always have plenty of fresh, clean air for combustion while increasing the overall heating efficiency. Venting material to be used is PVC, an extremely cost effective vent system.

**PTC215AS-0111 / 215,000 BTU/Hr Input, 199,950 BTU/Hr Output, Air Temp Rise 48° F, 60ft Heat Throw @ Max Mounting Height of 17ft**

**MODINPTC215AS-0111-396156**

Min. Buy 1EA Retail \$5445.00



### Modine Tubular Natural Gas Heater

This power vented propeller heater is inexpensive to install, easy to use and offers excellent in-service economy. Features include: stainless steel tubular heat exchanger, thermal efficiency of 82%, power exhaust that can be rotated 108 degrees, 100% shut-off, direct spark ignition system with continuous retry and a safety pressure switch to assure safe venting conditions. Designed with 115V/60Hz/1 phase power and natural gas, single stage.

**300,000 Btu/hr Input**

**MODINPTP300SS-0111-193808**

Min. Buy 1EA Retail \$2797.00



## Greenhouse Ventilation

### Green-Tek® HAF Fan

Great performance, energy efficiency and an air pattern that is designed for heat de-stratification. The OSHA approved guard means the fan can be mounted at any height. Our totally enclosed air over motor can be used in the harshest greenhouse environments. GT HAF Fans are easy to install and will give years of trouble free service. The ideal spacing is every 50'. Comes with a 9ft cord.

**20in, 1/10HP, with 9ft Cord**

**GRTKHAF20110C-18917**

Min. Buy 1EA



## Display Carts

### Grower Select® All-Purpose Transport Cart

The workhorse of the Grower Select cart line. The All-Purpose Transport Cart features all steel construction with a hot-dip galvanized finish, a welded wire base and three expanded metal mesh shelves. Connect multiple All-Purpose Transport Carts together using the heavy-duty drawbar and post system.

**3 Shelves, 5in Rig Casters, 59in L x 22in W x 82.5in H, 77lbs.**

**GSGS2259-31809**      **UPC 049961203181**

Min. Buy 1EA



### Grower Select® Retail Nesting Shopping Cart

Nesting shopping cart perfect for customer shopping in greenhouses and garden centers. Perfect for carrying bedding plants, perennials, hanging baskets and pots. Features all steel construction with a hot-dip galvanized finish. Carts can be nested to save space when not in use.

**37in L x 24in W x 43.5in H**

**GSGS4000-35245**

Min. Buy 1EA



## Greenhouse Ventilation

### Grower Select® Convection Tubing

4 mil UV-inhibited clear polyethylene tubing is engineered for uniform distribution and proper mixing of air to produce the best aerodynamic effect in the greenhouse. All of our convection tube is made from a UV stabilized greenhouse film. Specify hole size, position, spacing and length of roll sold by the lineal foot.

**24in x 100ft with Standard Punch**

**G522-9083-9800**

Min. Buy 1EA

**18in Custom Punch**

**G522-9076-75**

Min. Buy 1EA

**24in Custom Cut**

**G522-9082-98**

Min. Buy 1EA

**30in Custom Cut**

**G522-9088-115**

Min. Buy 1EA

Convection Tubing - Custom Punch



## Pot Covers & Foil

### Grower Select® Satin Sleeves

Pot sleeve that protects plant and creates a decorative look to enhance the appeal and add some personality to potted plants. Made of HDPE material that is see through but has a milky white haze to it. Each size features an easy to use drop and tear design on a wood header and 50 vents which allows moisture to escape to prevent disease.



**Fits 6in-6.5in Pots, 8in x 20in x 24in with 50 Vents 1000/cs**

**G509-0677-7414**

Min. Buy 1EA

**Fits 8in Pot, 10in Bottom W x 30in Top W x 30in H, 1000/cs**

**G509-0671-11515**

Min. Buy 1EA

**Fits 10.5in-11in Pot, 15in Bottom W x 30in Top W x 30in H, 500/cs**

**G509-0672A-6606**

Min. Buy 1EA



## Display Carts

### Poly-Tex® Tri-Step Display

Create a cascading display of color.. The bench tops are 18in, 24in and 36in deep. Expanded metal benchtops are available. Optional 40in high purlin holds six 10in hanging baskets. Specifications: 73.25in L x 40in W x 44.5in H (With Optional Purlin 92in H).

**Includes Casters & Purlin**

**POLTXPX7020CP-53500**

Min. Buy 1EA



## Display Carts

### TotalGrow™ Pure Flowering 200 Lamp

The most efficient and effective solution for simulating long days to control the timing of flowering. Perfect balance of red and far-red light output for night interruption/day length extension. No wasted light output in non-photoperiodic regions. Minimal power consumption and electrical infrastructure needs with simple installations.

**16W / 100-240V / Life hrs: 50,000 / typical**

**Coverage: 200sq ft**

**TG1B-3A-1104-BA4-4599**

Min. Buy 1EA





**Greenhouse Meters & Test Kits**

**Dilution Solutions™ Eco HM Digital EC Tester**

Eco HM digital EC meter for testing and monitoring to receive the desired results. Easily measure conductivity and TDS.

**6in x 1.7in x .7in**

**DILCOM80-3995**

Min. Buy 1EA Retail \$39.95



**Dilution Solutions™ Eco HM Digital pH Tester**

Eco HM digital pH tester for testing and monitoring to receive the desired results. Easily measure conductivity, pH, and temperature of water.

**6in x 1.7in x .7in**

**DILPH80-4995**

Min. Buy 1EA Retail \$49.95



**Dilution Solutions™ Pro HM Digital pH Meter**

Pro HM digital pH meter for testing and monitoring to receive the desired results. Easily measure pH and temperature of water.

**7.3in x 1.3in x 1.3in**

**DILPH200-9995**

Min. Buy 1EA Retail \$99.95



**Dilution Solutions™ HM Digital Meter**

Pro HM digital EC meter for measuring conductivity, TDS, temperature of water.

**7.3in x 1.3in x 1.3in**

**DILCOM100-7495**

Min. Buy 1EA Retail \$74.95



**Pot Covers & Foil**

**FloPak® Laminated Foil Sheet**

Use for wrapping plant pots. Foil protects plant and creates a decorative look to enhance the appeal and add some personality to potted plants.

**Evergreen - 20in x 20in Sheet - 500 per Bundle**

**FPKFS20QEG-17000**

Min. Buy 1EA

**Gold - 20in x 20in Sheet - 500 per Bundle**

**FPKFS20QGD-17000**

Min. Buy 1EA

**Red - 20in x 20in Sheet - 500 per Bundle**

**FPKFS20QR-17000**

Min. Buy 1EA



**FloPak® Luster Pot Covers**

Economically enhance the appeal and add a colorful decorative touch to potted plants. These pre-formed covers help to attractively display and boost plant sales by just adding some color and style to pots. Choose from a selection of colors and sizes. Cove

**Evergreen - 6.5in - 250/cs**

**FPK65EGL-5750**

Min. Buy 1EA

**Evergreen - 7in - 150/cs**

**FPK7EGL-5250**

Min. Buy 1EA

**Red - 6.5in - 250/cs**

**FPK65RL-5750**

Min. Buy 1EA

**Gold - 6in - 250/cs**

**FPK6GL-5750**

Min. Buy 1EA

**Gold - 6.5in - 250/cs**

**FPK65GL-5750**

Min. Buy 1EA

**Gold - 7in - 150/cs**

**FPK7GL-5250**

Min. Buy 1EA

**Gold - 10in - 150/cs**

**FPK10GL-7800**

Min. Buy 1EA





**Other Equipment**
**ProMarketing Motorola® RM Series Two-Way Business Radios**

RM Series two-way radios combine outstanding quality with excellent affordability. With crisp, clear audio throughout the workplace and exceptional durability. These radios undergo Motorola's unique Accelerated Life Testing (ALT). This rigorous laboratory testing simulates up to 5 years of field use, including: blowing rain, vibration, salt fog, blowing dust and extreme temperatures. Features: 4 or 8 CHANNELS, Channel Aliasing with Announcements - Assign each channel a user customized channel announcement to confirm which channel you are on, NOAA Weather Radio Channels - Dedicate a channel to monitoring weather and be automatically notified when there is an alert, Business Exclusive Frequencies - Operates 27 VHF Frequencies, Long Battery Life - Ships with a standard lithium ion battery which lasts up to 15 hours, Operates on 89 UHF Frequencies, FCC License is required, 2 Year Warranty.

**Covers up to 250,000sq ft / 4 Channels**

**PMIRMU2040**-20900    **UPC** 748091000249

Min. Buy 1EA


**ProMarketing Motorola® CLS Series Two-Way Radio**

Durable but lightweight, this two way radio delivers versatility of expanded communications by enhancing safety and security, improving response time and maximizing productivity. With little or no training required, these two way radios are remarkably simple to use, making them ideal for high employee turnover industries. FCC license is required.

**1 Watt 1 Channel UHF Radio / Covers up to 200,000sq ft or 15 floors indoors / Battery life up to 14 hours per charge / 2 Year Warranty**

**PMICLS1110**-15900    **UPC** 723755565128

Min. Buy 1EA


**ProMarketing Motorola® DLR Series Digital Two-Way Radio**

Digital, 900 MHz, license free radios leverage frequency hopping technology. This technology enables the radio to continually change frequencies, making it virtually impossible for others to listen to your private conversations. Enhance radio fleet privacy by simply setting a unique 4 digit Profile ID number. No FCC license required, 2 Year Warranty.

**Operates on 900 MHZ / 2 Channels / Covers up to 300,000sq ft or 25 floors indoors / Battery life up to 14 hours per charge / Not Compatible with analog radios (CLS, XTN, RM or RDX)**

**PMIDL1020**-20900

Min. Buy 1EA


**Greenhouse Ventilation**
**Schaefer® Galvanized Slantwall Exhaust Fan**

First choice of growers and other building owners looking for very low cost, high volume exhaust fans that flush-mount from inside the building and shed water and snow, once installed. Designed for high airflow and high efficiency and available in many sizes and configurations to meet application requirements. Fans ship fully assembled with aluminum inlet shutters, self-adjusting belt tensioner (on belt-drive models) and galvanized outlet guard. Cord not included.

**48in Diam / 8.4/4.2 Amps @ 115/230 Volts 60/50hz / Phase 1 / 5 Wings**

**SVE485S1**-141600

Min. Buy 1EA


**Schaefer® Versa-Kool® H.A.F. Barrel Fan**

Increase safety and productivity with Versa-Kool circulation fans. The patented guard design allows for greater air movement at very low noise levels. Improve air quality and working conditions by strategically placing Versa-Kool circulation fans using optional wall or ceiling mounts. The airflow ranges from gentle to powerful and the fans have the variable speed capability which allows you to select a perfect airflow pattern.

**12in Diam / 1.3/.65 Amps @ 115/230 Volts 60hz**

**SVEVK12**-16900    **UPC** 717490342854

Min. Buy 1EA


**Other Equipment**

**Wadsworth EnviroSTEP Control System**

There's no better combination of power and value than the EnviroSTEP. This integrated control offers precise control of all aspects of your climate: temperature, humidity, light level, CO2 and watering based on VPD. Single zone control. 3 setpoint temperature periods: day, night and DIF. 12 relay outputs with manual override switches. 2 analog outputs (0 to 10VDC) to control variable-speed equipment. Records the status of all inputs and outputs. Alarm notification: temperature, RH and power failure. Largest display in the industry; has menu-driven choices & graphic functions. Keypad for easy operation. This is an approved energy saving device.

**3 Setpoint Periods (Day, Night and DIF plus) / 12 Relay Outputs**

**WADSM4840**-300000

Min. Buy 1EA



# JR PETERS INC

## Controlled Release

### ICL Specialty Fertilizers (ICL-SF) Agriform® 20-10-5 Planting Tablets Plus Minors

Two-year planting tablets for root zone feeding of trees, shrubs and ground covers. Contains a high-nitrogen formula specifically engineered to help deliver bigger, greener plants.

**21g Tablets / 500ct**

**EVRE90026-6086**    **UPC 032247900263**

Min. Buy 1EA



### ICL Specialty Fertilizers (ICL-SF) Osmocote® Classic 14-14-14 3-4mo. Fertilizer

General purpose formulation for a wide variety of plant types especially those needing a boost of phosphorus. Excellent as a base feed for heavy feeding greenhouse crops in combination with Peters water-soluble. Ideal for topdressing established hanging baskets, perennials and foliage plants. Safe and easy long-term feeding of interior foliage plants. Great for combination planters, container gardens and landscape beds requiring N-P-K. For optimum results, incorporate in combination with Micromax® Micronutrients.

**50lb**

**EVRE90550-10163**    **UPC 032247905503**

Min. Buy 1EA



### ICL Specialty Fertilizers (ICL-SF) Osmocote® Plus 15-9-12 5-6mo. Fertilizer

Is a complete fertilizer solution that will continue to feed the plants after they are sold and will improve the customer's overall success. Works great on hanging baskets and potted plants grown in greenhouse production, as well as container grown nursery plants and in landscape containers and beds. Adding a controlled release fertilizer to baskets that contain plants that have a higher demand for nutrients allows you to fertilize all the other plants with a standard water soluble program.

**50lb**

**EVRE903226-11575**    **UPC 032247903226**

Min. Buy 1EA



## Basic Nutrients

### Jack's® Epsom Salt

An essential item to the Jack's® 3-2-1 program.

**1kg, 6/cs**

**JRP79161-1852**

Min. Buy 6EA

## Water Soluble Fertilizer

### JR Peters® Jacks Professional® 20-10-20 General Purpose Fertilizer

A water-soluble fertilizer designed to be mixed with water for the most accurate and effective nutrient delivery to the plant. It contains the traditional micronutrient levels needed for general production including propagation and all types of bedding plants. High nitrate nitrogen levels (60% of the total) provides for green foliage and more compact growth.

**25lb**

**JRP77840-4352**

**UPC 671341778400**

Min. Buy 1EA



### JR Peters® Jacks Professional® 20-3-19 Petunia FeED

A proprietary blend of iron chelates are used to increase the availability of iron over a broad range of pH. Contains double the iron found in typical peat-lite formulations. Contains additional magnesium for optimum crop performance, low phosphorus level that help prevent excessive elongation, high nitrate nitrogen, moderately high potential acidity and no urea.

**25lb**

**JRP7770-4630**

**UPC 671341777700**

Min. Buy 1EA



## Water Soluble Fertilizer

### Jack's® Nutrients FeEd 10-30-20 Bloom Fertilizer

Promotes root growth plus flower and fruit development. This 1:3:2 major nutrient ratio combination promotes blooming resulting in enhanced flower buds and fruit sets. Proven and trusted by professional growers for over 70 years.

**1Kg (2.2lb)**

**JRP79061**-1798

Min. Buy 1EA

**25lb**

**JRP79060**-6667

Min. Buy 1EA



### Jack's® Nutrients FeEd 15-6-17 Clone Starter Fertilizer

Promotes fast root development and extensive root system growth. Best used for fertilizing young seedlings, transplants, clones and newly set root cuttings.

**1Kg (2.2lb)**

**JRP79071**-1728

Min. Buy 1EA

**25lb**

**JRP79070**-5926

Min. Buy 1EA



### Jack's® Nutrients FeEd 12-4-16 RO Pure Water Fertilizer

Nutrient uptake in pure and reverse osmosis waters. Designed to provide a highly soluble NPK plus an enhanced micronutrient package along with 7% Calcium and 2% soluble magnesium to help replace the nutrients that are missing from pure water and RO filter water types.

**1Kg (2.2lb)**

**JRP79041**-1728

Min. Buy 1EA

**25lb**

**JRP79040**-5926

Min. Buy 1EA



### Jack's® Nutrients FeEd 5-12-26 Part A Fertilizer

Promotes the growth of leaves and strong roots. Blended with purely soluble and available nutrients to allow the grower maximum flexibility. Specific mixtures of macro, secondary and micronutrients deliver an efficient combination of nutrients suitable for many different growing environments and crop types.

**1Kg (2.2lb)**

**JRP79031**-1667

Min. Buy 1EA

**25lb**

**JRP79030**-5509

Min. Buy 1EA



### Jack's® Nutrients FeEd 15-0-0 Calcium Nitrate Part B Fertilizer

Promotes Calcium uptake and strong leaf growth. BOOST 15-0-0 is a pure combination of a calcium and nitrate nitrogen allowing growers flexibility to boost their levels according to different crops or stages of growth. Used in combination with Jack's Part A FeED, these two products combined to make a totally available nutrient solution.

**1Kg (2.2lb)**

**JRP79081**-1620

Min. Buy 1EA

**25lb**

**JRP79080**-3426

Min. Buy 1EA



### Jack's® Nutrients FeEd 5-50-18 UltraViolet Fertilizer

Promotes Bud Set & Enhanced Flower Production. Get ready for a serious boost of available phosphorus. The primary goal of this formula is to assist in shutting down the strong vegetative growth stage of the plant and promote the switch to reproductive or flowering phase of plant and flower development.

**1Kg (2.2lb)**

**JRP79011**-1852

Min. Buy 1EA

**25lb**

**JRP79010**-6667

Min. Buy 1EA



### Jack's® Nutrients FeEd 15-5-20 Tap Water Fertilizer

Promotes growth of leaves and strong roots. Allow your plants to drink this formula designed to provide all the macro, secondary and micro nutrients on a one-part system. Specifically formulated for alkaline tap, city or well water types. This potentially acidic formula will lower pH over time without forgetting the extra soluble Ca, Mg and the right amount of micronutrients.

**1Kg (2.2lb)**

**JRP79051**-1728

Min. Buy 1EA

**25lb**

**JRP79050**-5926

Min. Buy 1EA



### Jack's® Nutrients FeEd 7-15-30 Finish Fertilizer

Promotes strong finished plants. You have always been told to finish strong. This formula is ideally formulated for this purpose to provide your plants with low N, high P and high K content to keep the whole plant happy to the end of its crop cycle.

**1Kg (2.2lb)**

**JRP79021**-1728

Min. Buy 1EA

**25lb**

**JRP79020**-5926

Min. Buy 1EA







## Liquid

**JH Biotech Biomin® Boron**

Biomin® Boron contains boron for soil and/or foliar application. Completely bioavailable and non-phytotoxic to plants when applied in accordance to directions. Designed to prevent and correct boron deficiencies and to boost crops during critical or fast growing periods. May be applied with nitrogen fertilizers.

**2.5gal****JH051001**-6833

Min. Buy 1EA

**JH Biotech Biomin® Calcium**

Biomin® Calcium contains chelated calcium designed for soil and foliar application. It is completely bioavailable and non-phytotoxic to plants when applied in accordance to directions. Designed to prevent and correct micronutrient deficiencies and to boost crops during critical or fast growing periods. May be applied with nitrogen fertilizer.

**2.5gal****JH051005**-8083

Min. Buy 1EA

**JH Biotech Biomin® Copper**

Biomin® Copper contains chelated copper for soil and/or foliar application. Completely bioavailable and non-phytotoxic to plants when applied in accordance to directions. Designed to prevent and correct copper deficiencies and to boost crops during critical or fast growing periods. May be applied with nitrogen fertilizers.

**2.5gal****JH051008**-8083

Min. Buy 1EA

**JH Biotech Biomin® Iron**

Biomin® Iron contains chelated iron for soil and/or foliar application. Completely bioavailable and non-phytotoxic to plants when applied in accordance to directions. Designed to prevent and correct iron deficiencies and to boost crops during critical or fast growing periods. May be applied with nitrogen fertilizers.

**2.5gal****JH051010**-8083

Min. Buy 1EA

**JH Biotech Biomin® Manganese**

Biomin® Manganese contains nitrogen and chelated manganese for soil and/or foliar applications. It is completely bioavailable and nonphytotoxic to plants when applied in accordance to directions. Biomin® Manganese is designed to prevent and correct manganese deficiency and to boost crops during critical or fast growing periods. Biomin® Manganese may be applied with nitrogen fertilizers.

**2.5gal****JH051012**-8083

Min. Buy 1EA

**JH Biotech Biomin® Magnesium**

Biomin® Magnesium contains chelated magnesium for soil and/or foliar application. Completely bioavailable and non-phytotoxic to plants when applied in accordance to directions. Designed to prevent and correct magnesium deficiencies and to boost crops during critical or fast growing periods. May be applied with nitrogen fertilizers.

**2.5gal****JH051011**-8083

Min. Buy 1EA

**JH Biotech Biomin® Molybdenum**

Biomin® Molybdenum contains molybdenum for soil and/or foliar application. Completely bioavailable and non-phytotoxic to plants when applied in accordance to directions. Designed to prevent and correct molybdenum deficiencies and to boost crops during critical or fast growing periods. May be applied with nitrogen fertilizers.

**2.5gal****JH051014**-17397

Min. Buy 1EA

**JH Biotech Biomin® Zinc**

Biomin® Zinc contains chelated zinc for soil and/or foliar application. Completely bioavailable and non-phytotoxic to plants when applied in accordance to directions. Designed to prevent and correct zinc deficiencies and to boost crops during critical or fast growing periods. May be applied with nitrogen fertilizers.

**2.5gal****JH051021**-8083

Min. Buy 1EA



### Water Soluble Fertilizer

#### Sustane® Hi-N WDF Fertilizer 12-0-1

A high analysis, water dispersible, nitrogen fertilizer. Specifically formulated to promote rapid and durable greening and plant growth. Efficiently delivers a unique blend of soluble organic nitrogen sources to support plant growth. It can be used on diverse plants produced in a wide variety of growing systems.

**1lb**

**SNF70552001-672**

Min. Buy 12EA

**3lb**

**SNF70552003-1679**

Min. Buy 12EA



#### Sustane® Hi-N® WDF Fertilizer 12-0-1

A high analysis, water dispersible, nitrogen fertilizer. Specifically formulated to promote rapid and durable greening and plant growth. Efficiently delivers a unique blend of soluble organic nitrogen sources to support plant growth. It can be used on diverse plants produced in a wide variety of growing systems.

**40lb**

**SNF70552011-11493**

Min. Buy 1EA



### Controlled Release

#### Sustane® 4-6-4 All Purpose Fertilizer

A natural organic all purpose professional landscape fertilizer. For plant establishment, greenhouse and nursery growing and organic crop production. Adds approximately 10% humates by volume and increases the nutrient and water holding capacity of the soil. Also strengthens plants tolerance against hot dry conditions, provides greater root development, improves buffering against changes in soil pH, increases the soil's ability to suppress plant pathogens and helps increased soil porosity and stability for greater root development and water holding capacity.

**50lb**

**SNF30201111-3477**

Min. Buy 1EA



#### Sustane® Root Zone 4-6-4 Feeder Pak Fertilizer

This permeable fertilizer pack can be left to steep in a watering can overnight to make a Compost Tea brew for topical application; or installed in the soil or potting mix as a Root Zone Feeder Pack. Sustane 4-6-4 Root Zone Feeder Packs provide single dose applications of Sustane organic slow release nitrogen fertilizer. Sustane Feeder Packs are designed to provide lasting plant nutrition in a completely biodegradable filter pack. Sustane 4-6-4 Root Zone Feeder Pack is designed for use in all flowers, trees, shrubs and perennial plantings including landscape areas, potted plants and hanging baskets.

**21g Paks / 250ct**

**SNF80202020-8727**

Min. Buy 1EA



### Loose Fill Media

#### ASB Greenworld® GM Grow Mix 15% Perlite

All purpose growing medium with perlite. Specially formulated substrate for general greenhouse use, containers and bedding plants.

**2.8cu ft Loose Fill Bag**

**ASB310830-1814**

Min. Buy 1EA



#### ASB Greenworld® GM Grow Mix 20% Perlite

All purpose growing medium with extra perlite for enhanced aeration and drainage. Specially formulated substrate for general greenhouse use, containers and bedding plants.

**2.8cu ft Loose Fill Bag**

**ASB310830-20-1634**

Min. Buy 1EA



### Compressed Media

#### ASB Greenworld® GM Grow Mix 15% Perlite

All purpose growing medium with perlite. Specially formulated substrate for general greenhouse use, containers and bedding plants.

**3.8cu ft Compressed Bale**

**ASB310909-2902**

Min. Buy 1EA



#### ASB Greenworld® Grower Mix VPW 420

Professional growing medium made of coarse fibrous peat moss, perlite and vermiculite for the best balance of porosity, water holding capacity, and nutrient retention. Also includes the best Mycorrhizae fungi by Mycorrhizal Applications, which increases plant establishment, drought protection, and improves healthy soil biology.

**3.8cu ft Compressed Bale**

**ASB313780-4175**

Min. Buy 1EA



#### ASB Greenworld® GM Grow Mix 20% Perlite

All purpose growing medium with extra perlite for enhanced aeration and drainage. Specially formulated substrate for general greenhouse use, containers and bedding plants.

**3.8cu ft Compressed Bale**

**ASB310909-20-3657**

Min. Buy 1EA



# GrowerSelect®

## Loose Fill Media

### Grower Select® H2 Professional Mix

H2 Professional Mix is a heavy-weight bark mix formulated for use in larger containers and longer term crops, both in greenhouses and outdoors. H2's higher ratio of bark:peat gives it an excellent balance of porosity and water holding capacity.

#### 2.8cu ft Loose Fill Bag

**PRBBFGGSH228**-1874 UPC 049121016514

Min. Buy 1EA



### Grower Select® M1 Professional Mix

M1 Professional Mix is a versatile medium-weight growing medium designed for growing in anything from small pots to large containers and hanging baskets. M1 was improved in 2018 with the use of Southern Yellow Pine Bark.

#### 2.8cu ft Loose Fill Bag

**PRBBFGGSM128**-1874 UPC 049121016491

Min. Buy 1EA



### Grower Select® M2 Professional Mix

M2 Professional Mix is a lower cost version of our ultra-popular M1 blend. M2 is a great performer on horticultural crops like bedding plants, perennials, nursery stock, perennials, hanging baskets, vegetables.

#### 2.8cu ft Loose Fill Bag

**PRBBFGGSM228**-1822 UPC 049121016507

Min. Buy 1EA



# PROMIX®

## Compressed & Loose Fill Media

### Premier® PRO-MIX® BX Biofungicide + Mycorrhizae General Purpose Grower Mix

General purpose peat-based professional growing medium designed for general greenhouse use and transplanting applications. Perlite and vermiculite provide a balance of moisture and nutrient retention along with good drainage creating an ideal growing environment. With biofungicide and mycorrhizae added.

#### 2.8cu ft Loose Fill Bag

**PRB1028500RG**-2253 UPC 025849115005

Min. Buy 1EA

#### 3.8cu ft Compressed Bale

**PRB1038500RG**-4992 UPC 025849125004

Min. Buy 1EA



### Premier® PRO-MIX® HP Biofungicide + Mycorrhizae High Porosity Grower Mix

High porosity peat-based growing medium. Perlite ensures optimum growth, especially when high air capacity and extra drainage are required. An ideal formulation for growers in need of a media adapted to watering flexibility and crop seasonality. With biofungicide and mycorrhizae added.

#### 2.8cu ft Loose Fill Bag

**PRB2028500RG**-2412 UPC 025849215002

Min. Buy 1EA

#### 3.8cu ft Compressed Bale

**PRB2038500RG**-5143 UPC 025849225001

Min. Buy 1EA



### Premier® PRO-MIX® BX Mycorrhizae General Purpose Grower Mix

General purpose peat-based professional growing medium designed for general greenhouse use and transplanting applications. Perlite and vermiculite provide a balance of moisture and nutrient retention along with good drainage creating an ideal growing environment. With mycorrhizae added.

#### 2.8cu ft Loose Fill Bag

**PRB10281RG**-2113 UPC 025849102814

Min. Buy 1EA

#### 3.8cu ft Compressed Bale

**PRB10381RG**-4639 UPC 025849103811

Min. Buy 1EA



### Premier® PRO-MIX® HP Mycorrhizae High Porosity Grower Mix

High porosity peat-based growing medium. Perlite ensures optimum growth, especially when high air capacity and extra drainage are required. An ideal formulation for growers in need of a media adapted to watering flexibility and crop seasonality. With mycorrhizae added.

#### 2.8cu ft Loose Fill Bag

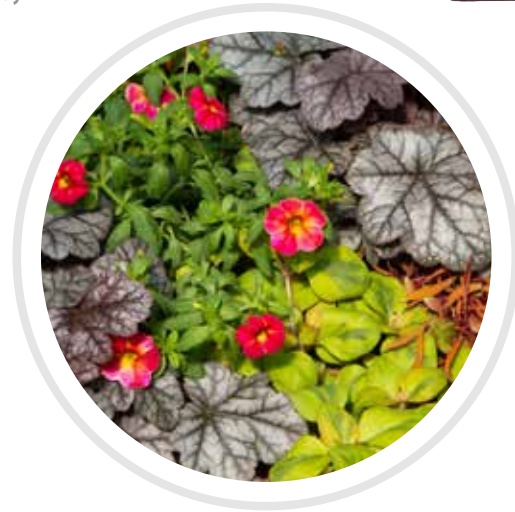
**PRB20281RG**-2274 UPC 025849202811

Min. Buy 1EA

#### 3.8cu ft Compressed Bale

**PRB20381RG**-4790 UPC 025849203818

Min. Buy 1EA





# MICHIGAN PEAT COMPANY

## Loose Fill Media

### Michigan Peat® BACCTO® High Porosity Professional Planting Mix

Pre-moistened mix provides increased drainage and faster drying for bedding and potted crops.

#### 2.0cu ft Bag

**MPC1792**-1743      **UPC** 028009117925  
Min. Buy 1EA      Retail \$27.49



### Michigan Peat® BACCTO® Professional Planting Mix

Pre-moistened and formulated to enhance the growth of bedding and potted crops in flats, pots and hanging baskets where higher moisture reserves and shelf life are needed.

#### 2.0cu ft Bag

**MPC1732**-1796      **UPC** 028009117321  
Min. Buy 1EA      Retail \$27.99



## Minerals and Amendments

### VVP Industries® Medium Horticultural Perlite

Used primarily for plugs, small cells, hanging baskets and gardening. Horticultural perlite is clean, sterile, pH neutral, non-flammable, odorless, nontoxic and neither decays nor shrinks even pests such as insects and fungi can't destroy it.

#### 4cu ft Bag

**VVP105705**-1049      **UPC** 018296105705  
Min. Buy 1EA



### VVP Industries® Coarse Horticultural Perlite

Used primarily in soil mixes, hydroponics and gardening. The standard Perlite. Horticultural perlite is clean, sterile, pH neutral, non-flammable, odorless, nontoxic and neither decays nor shrinks even pests such as insects and fungi can't destroy it.

#### 4cu ft Bag

**VVP105408**-1334      **UPC** 018296105408  
Min. Buy 1EA



### VVP Industries® Super Coarse Horticultural Perlite

Excellent as a substrate for hydroponics. Super coarse grade expanded perlite is clean, sterile, pH neutral, non-flammable and nontoxic. Increases aeration and drainage of growing media and helps anchor roots of young plants.

#### 4cu ft Bag

**VVP105040**-1439      **UPC** 018296105040  
Min. Buy 1EA



### VVP Industries® Medium Horticultural Vermiculite

Preferred for seeding, plugs, small cells and moisture retentive soil mixes. Horticultural vermiculite is permanent, clean, odorless, non-toxic, sterile and pH neutral. It will not deteriorate, turn moldy or rot. Mixed with soil, peat, composted pine bark, fertilizers, pesticides and herbicides and promotes faster root growth and quick anchorage to young roots. Vermiculite granules attract and hold ammonium, potassium, calcium and magnesium needed for the growing plants. Vermiculite/peat mixture provides excellent aeration and retention of plant food and moisture.

#### 4cu ft Bag

**VVP107402**-1673      **UPC** 018296106405  
Min. Buy 1EA



### VVP Industries® Coarse Horticultural Vermiculite

Horticultural vermiculite is permanent, clean, odorless, non-toxic, sterile and pH neutral. It will not deteriorate, turn moldy or rot. Mixed with soil, peat, composted pine bark, fertilizers, pesticides and herbicides and promotes faster root growth and quick anchorage to young roots. Vermiculite granules attract and hold ammonium, potassium, calcium and magnesium needed for the growing plants. Vermiculite/peat mixture provides excellent aeration and retention of plant food and moisture.

#### 4cu ft Bag

**VVPVCH/4/EA**-2312      **UPC** 018296107402  
Min. Buy 1EA



### VVP Industries® Super Coarse Horticultural Vermiculite

Preferred for hydroponics and high porosity soil mixes. Horticultural vermiculite is permanent, clean, odorless, non-toxic, sterile and pH neutral. It will not deteriorate, turn moldy or rot. Mixed with soil, peat, composted pine bark, fertilizers, pesticides and herbicides and promotes faster root growth and quick anchorage to young roots. Vermiculite granules attract and hold ammonium, potassium, calcium and magnesium needed for the growing plants. Vermiculite/peat mixture provides excellent aeration and retention of plant food and moisture.

#### 4cu ft Bag

**VVPVVC4EA**-2397  
Min. Buy 1EA



# Speedgrow™ Green

Stone wool with all natural binder.

## Hydroponic Substrates

### Speedgrow® Green Plug

A natural alternative to growing plants in traditional mediums. Speedgrow differs from other stone wool products that may contain phenols, acrylics and artificial dyes in that it incorporates an all natural, bio-based binder. It offers a unique combination of high water absorption and good drainage for an optimal water /air ratio. Speedgrow provides the grower a clean, inert and disease free rooting medium that is easily adjusted. Ideal for hydroponic growing.

**1in**

**SPGR29420000**-7075

Min. Buy 1EA / 5x200 plugs

**1.5in**

**SPGR29420018**-11025

Min. Buy 1EA / 9x100 plugs



### Speedgrow® Green Plugs With Tray

A natural alternative to growing plants in traditional mediums. Speedgrow differs from other stone wool products that may contain phenols, acrylics and artificial dyes in that it incorporates an all natural, bio-based binder. It offers a unique combination of high water absorption and good drainage for an optimal water /air ratio. Speedgrow provides the grower a clean, inert and disease free rooting medium that is easily adjusted. Ideal for hydroponic growing.

**1.5in Plugs In 84ct Tray**

**SPGR29420007**-11848

Min. Buy 11EA

**1.5in Plugs In 84ct Tray - Retail**

**SPGR29510004BFG**-981    **UPC** 049121014121

Min. Buy 10EA



### Speedgrow® Green Cubes

A natural alternative to growing plants in traditional mediums. Speedgrow differs from other stone wool products that may contain phenols, acrylics and artificial dyes in that it incorporates an all natural, bio-based binder. It offers a unique combination of high water absorption and good drainage for an optimal water /air ratio. Speedgrow provides the grower a clean, inert and disease free rooting medium that is easily adjusted. Ideal for hydroponic growing.

### Speedgrow® Green Starter Cubes

**1.5in**

**SPGR29500011**-10269

Min. Buy 750EA

**3in x 3in x 2.5in**

**SPGR29500006**-10346

Min. Buy 224EA

**3in - 14pk Retail**

**SPGR29500006BFG**-842    **UPC** 049121013957

Min. Buy 16EA



### Speedgrow® Green Big Cubes

**4in x 4in x 4in**

**SPGR295000010**-7210

Min. Buy 75EA

**4in x 4in x 2.6in H**

**SPGR29500001**-5367

Min. Buy 120EA

**4in - 5pk Retail**

**SPGR295000010R**-635    **UPC** 491210154186

Min. Buy 15EA

**6in - 40/cs**

**SPGR29510001**-10640

Min. Buy 1EA

**8in - 18/cs**

**SPGR29420007BFG**-425    **UPC** 049121014718

Min. Buy 18EA

