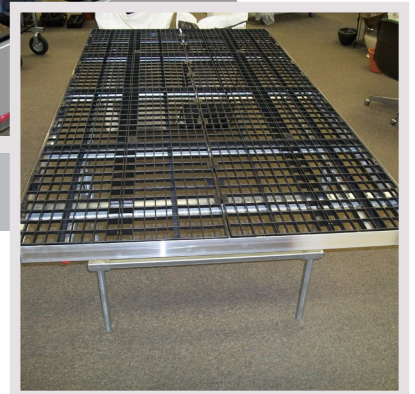
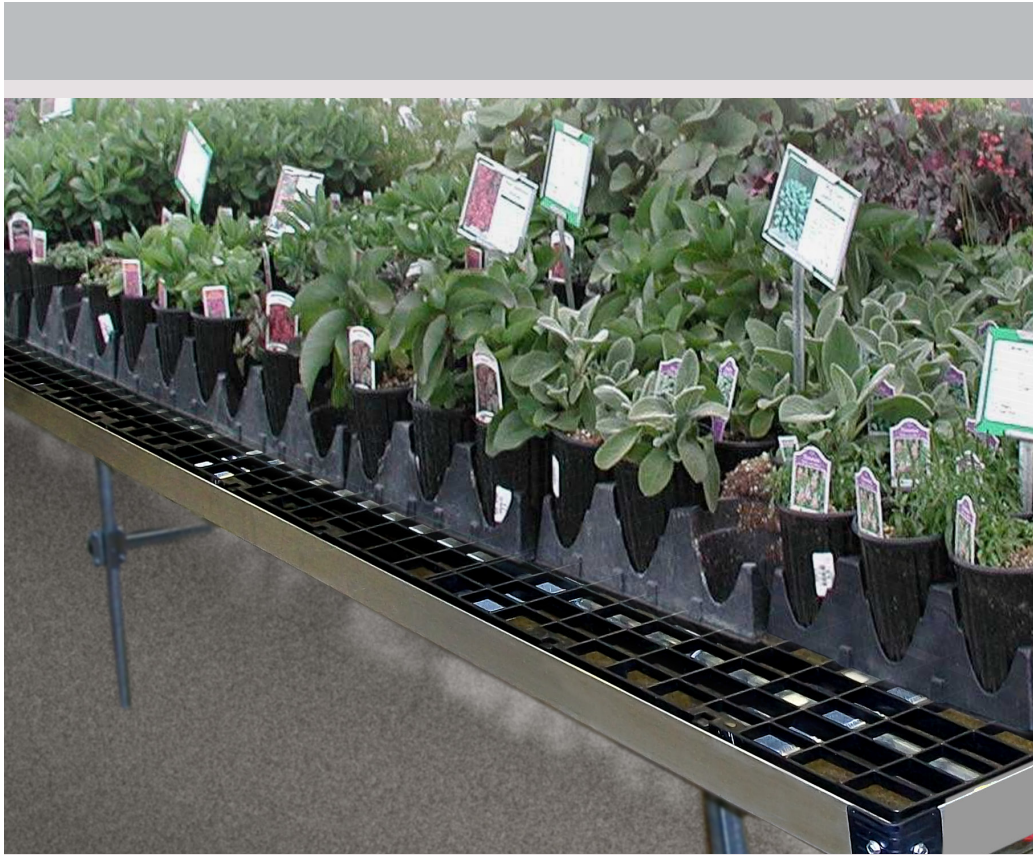


Ultra Plastic Freestanding Stationary Bench Assembly Manual



Thank you for your order, this assembly manual was created to provide you the information and required steps needed when assembling your new Grower Select Bench System. Please check the packing slip when the order is received. Separate out all the parts and count them to ensure everything needed is included. If there are questions about the shipment, or assembly steps please call BFG Supply at 1-800-798-2891.

Tools Needed

- Hammer
- Drill with Assorted Bits (Impact Driver Recommended)
- 5/16in Hex Head Driver, Assorted Other Drivers, 7/16in Driver/Socket
- Hack Saw
- Flat Head/Philips Screw Drivers
- Leather Gloves

Parts Description List



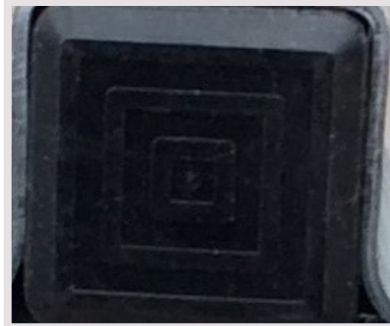
1in Square Tubing used for 30in Standard Legs



1.315in Round Tubing used as Support Rail



1 1/4in Square Tubing used for Leg Support Crossbars



Square Cap Plugs used for Both Ends of 1in and 1 1/4in Square Tubing

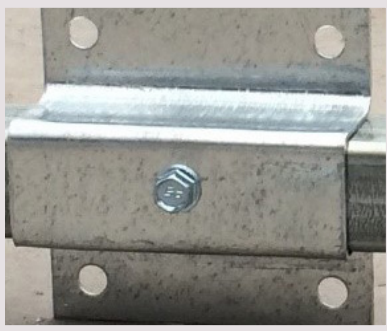


Round Cap Plugs used for Both Ends of Round Tubing Support Rails



Bolts and Nuts to be used with Clamps

All Clamps Will Be Used in Combination With One Another At Times



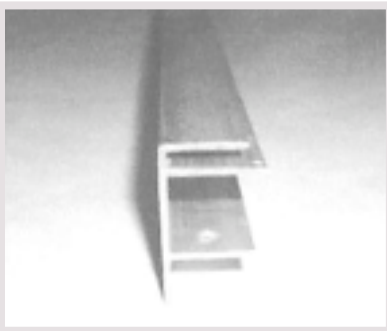
1 in Square Clamps to be used with Square 1 in Standard Legs



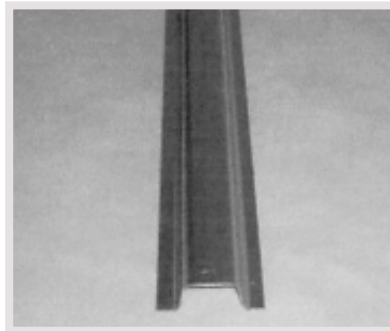
1.315 in Round Clamps to be used with Round 1.315 in Support Rails



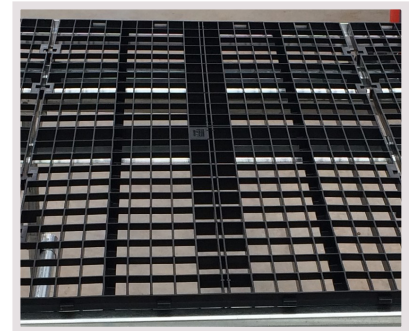
1 1/4 in Square Clamps to be used with Square 1 1/4 in Leg Support Crossbars



Aluminum Rail Bench Top Ends and Sides Trim



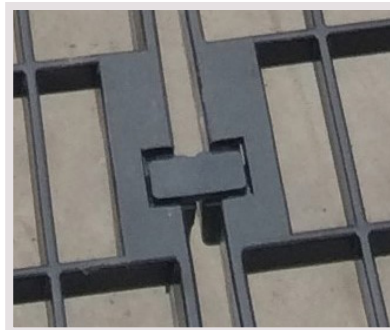
Bench Top Crossbar Support (Hat Section), Standard Spacing is 2 ft On Center



Ultra Plastic Bench Top Sections



3/4 in Tek Screws to be used to:
Attach Aluminum Rails and
Bench Top Crossbar Supports
(Hat Sections), Aluminum Rails
in Corners and Corner Protectors



Ultra Plastic Bench Top Clips



Corner Protectors

NOTE: Please read through the instructions completely before starting!

WARNING: The hat sections as well as the other steel pieces can have very sharp edges. Take precautions when handling. Wear Gloves!

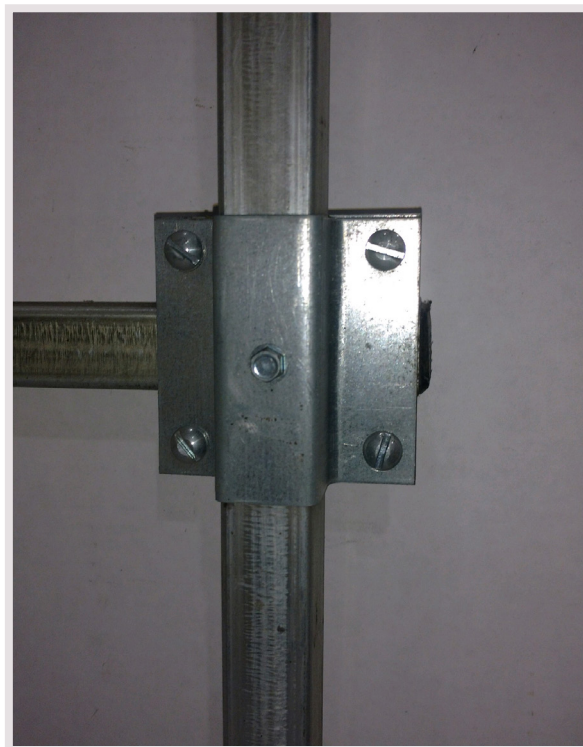
Step 1 of 12

Your parts will come in and look like the pictures below. Make sure all the necessary parts are there.



Step 2 of 12

Take the 30in Standard 1in Square Legs and put cap plugs in each end of the legs and attach 1 – 1in Square Clamp at the halfway point of the leg, anchor the clamp with a $\frac{3}{4}$ in TEK Screw.



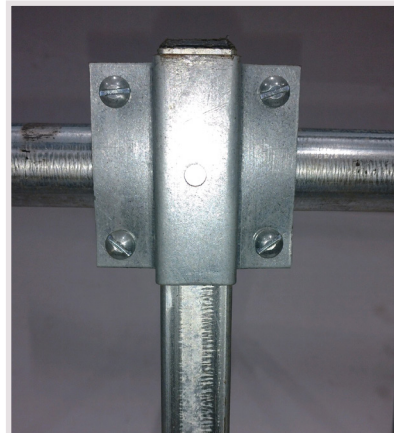
Step 3 of 12

Take the 1in Square Leg Supports and put cap plugs in each end and attach each of them to 2 legs with 1in Square Clamps, anchor the clamps with a $\frac{3}{4}$ in TEK Screw.



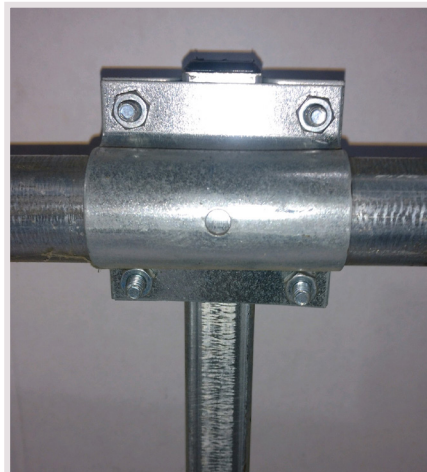
Step 4 of 12

Take 1in Square Clamps and using a $\frac{3}{4}$ in TEK Screw anchor them each to the top of each leg as in the picture to the right. Repeat step with other legs. The leg sets for each end of the bench are set in 2ft from each end of the bench and then the others are spaced out as needed.



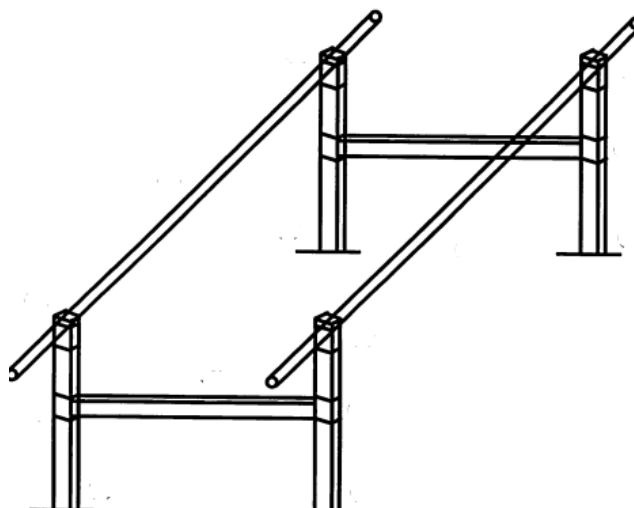
Step 5 of 12

Take 1 – 1.315in Round Clamp and attach it horizontally to the 1in Square Clamp on each leg that was put on in Step 4.

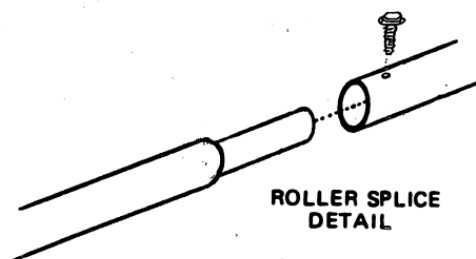
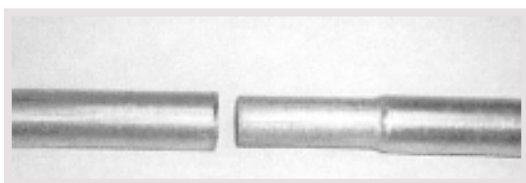


Step 6 of 12

Take 2 of the 1.315in Round Tubing with round cap plugs in each end and put each end into one of the round clamps that was put on each leg in Step 5. These are the Support Rails. The Support Rails should be placed on Inside of the legs. If the length of your bench is 12ft or less the Support Rail will be one piece. If it is longer than 12ft the Swage (male) end will need to be connected to the plain (female) end using a tek screw like in the picture and drawing to the right.



Picture of Support Rails on Legs

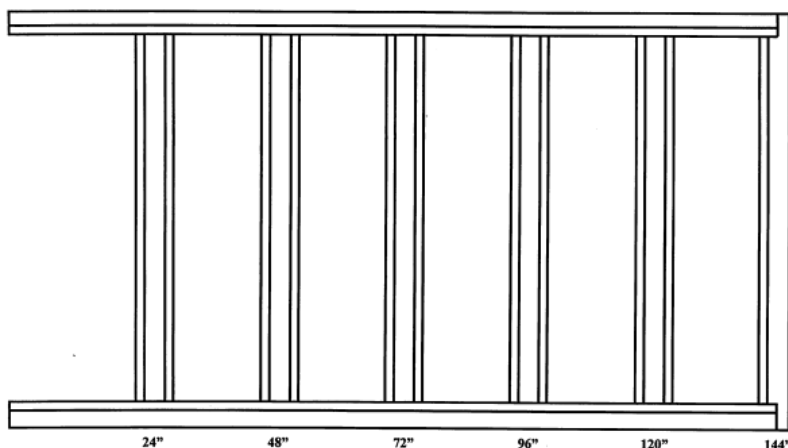
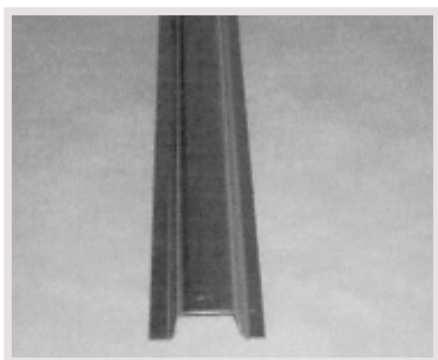


ROLLER SPLICE
DETAIL

NOTE: We advise pre-drilling the female roller for the tek screw prior to assembly.

Step 7 of 12

Take the Bench Top Crossbar Supports (Hat Sections) and place them across the Support Rails at 2ft on center.

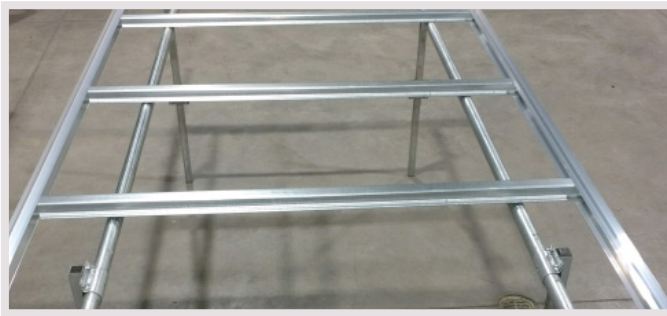
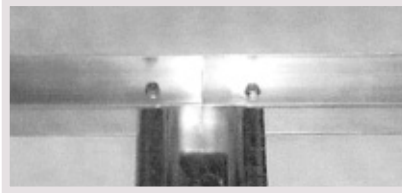
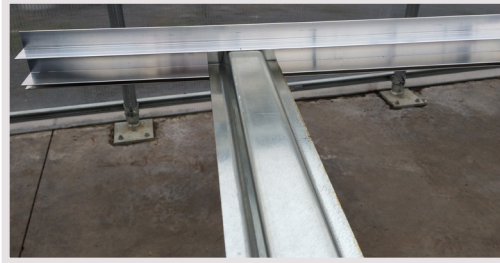


Standard bar spacing is 24"

NOTE: The end hat section is mounted 1/2 on and 1/2 off of the side rail.

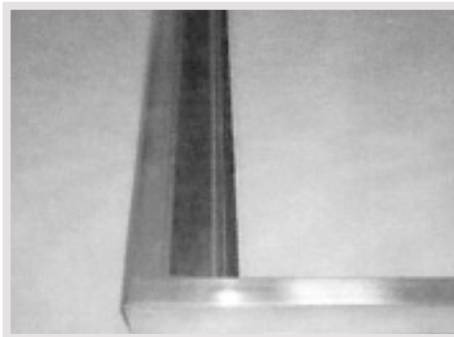
Step 8 of 12

Take the 2 pieces of Aluminum Rail Bench Top Side Trim and slide the Bench Top Crossbar Supports (Hat Sections) into them. Repeat this step with the other piece of Side Trim. Using a $\frac{3}{4}$ in TEK Screw from underneath, anchor each end of the Hat Sections to the Aluminum Rail. If splicing is required on Aluminum Side Rails, splices should not be directly opposite each other. Each end of the splice should be attached to a Hat Section as in the pictures to the right.



Step 9 of 12

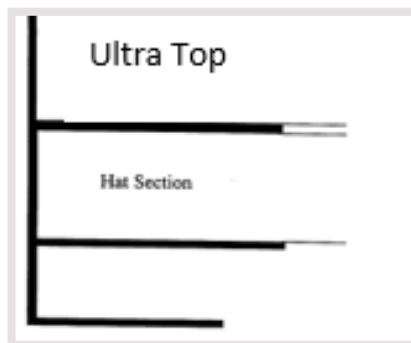
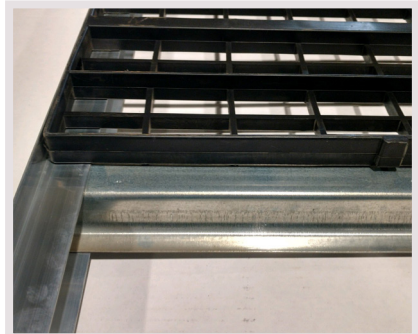
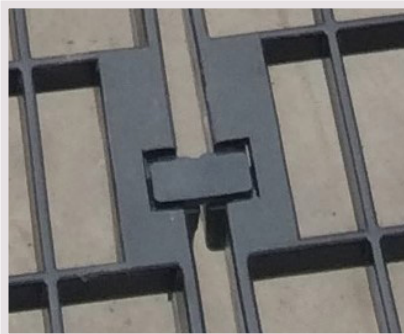
The end Hat Sections should be positioned half on, half off the aluminum end rail as in the picture to the right. Take the 2 pieces of Aluminum Rail Bench Top End Trim and fit them together with the Side Trim. Then attach the 4 corners of the trim with $\frac{3}{4}$ in TEK Screws.



Step 10 of 12

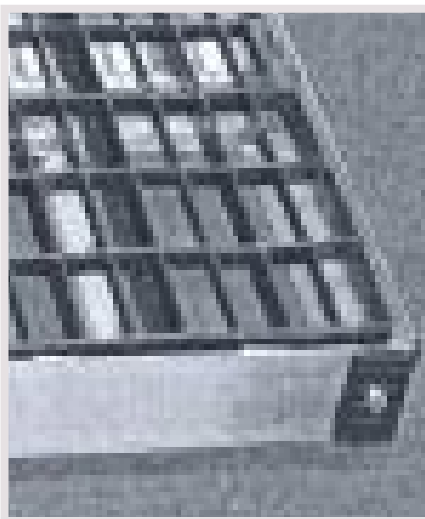
Take the sections of Ultra Plastic Bench Top and place them on top of the Hat Sections and Trim and attach them to one another using the clip in the picture to the right.

Put the Ultra Plastic Tops and Hat Sections together with the Aluminum Rail as shown in the picture to the right.

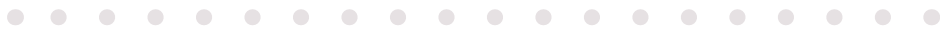


Step 11 of 12

Take the 4 Corner Protectors and attach them to the 4 corners of the Bench Rails using a 3/4in TEK Screw on each side.



Step 12 of 12



ALL DONE. The Bench should look like the picture below. If there are any questions about any of the above steps please call BFG Supply at 1-800-798-2891.

