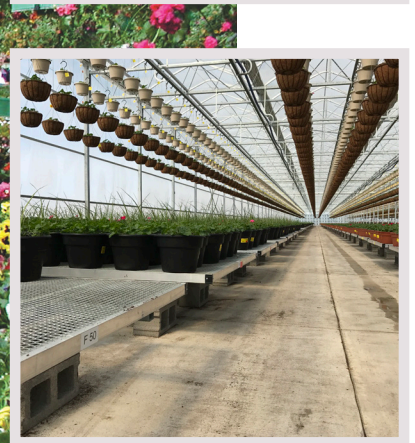


Expanded Metal Freestanding Rolling Bench Assembly Manual



Thank you for your order, this assembly manual was created to provide you the information and required steps needed when assembling your new Grower Select Bench System. Please check the packing slip when the order is received. Separate out all the parts and count them to ensure everything needed is included. If there are questions about the shipment, or assembly steps please call BFG Supply at 1-800-798-2891.

Tools Needed

- Hammer
- Drill with Assorted Bits (Impact Driver Recommended)
- 5/16in Hex Head Driver, Assorted Other Drivers, 7/16in Driver/Socket
- Hack Saw
- Flat Head/Philips Screw Drivers
- Leather Gloves

Parts Description List



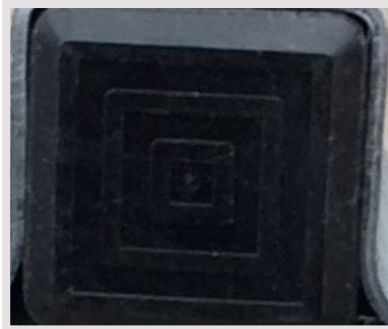
1in Square Tubing used for 30in Standard Legs, and Anti-Tip Bracket Mounting Bar



1 1/4in Square Tubing used for Leg Support Crossbars



1.315in Round Tubing used as Support Rail and Standard Rollers



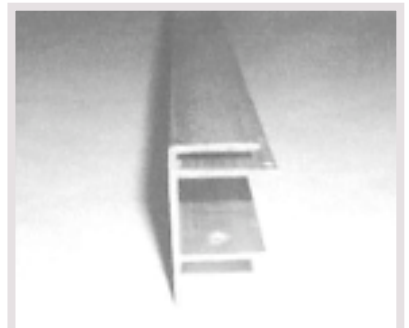
Square Cap Plugs used for Both Ends of 1in and 1 1/4in Square Tubing



Round Cap Plugs used for Both Ends of Round Tubing Support Rails and Standard Rollers

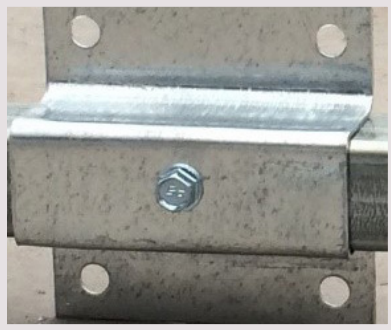


Bolts and Nuts to be used with Clamps

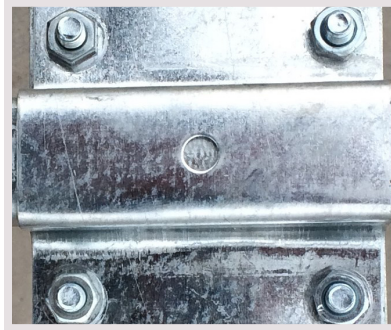


Aluminum Rail Bench Top Ends and Sides Trim

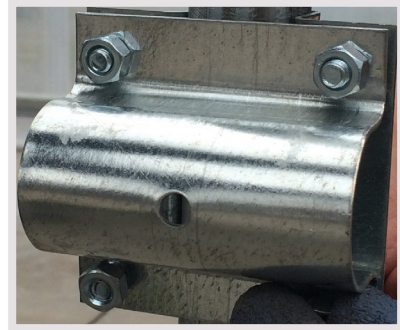
All 3 Clamps Will Be Used in Combination With One Another At Times



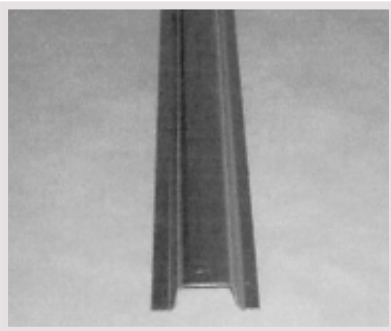
1in Square Clamps to be used with Square 1in Standard Legs and Anti-Tip Bracket Mounting Bar



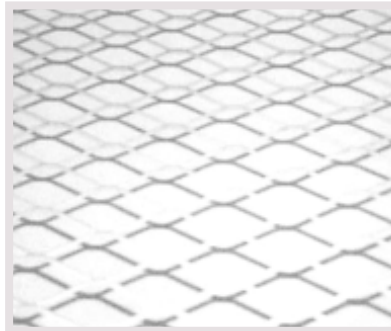
1 1/4in Square Clamps to be used with Square 1 1/4in Leg Support Crossbars



1.315in Round Clamps to be used with Round 1.315in Support Rails



Bench Top Crossbar Support (Hat Section), Standard Spacing is 1.333ft On Center



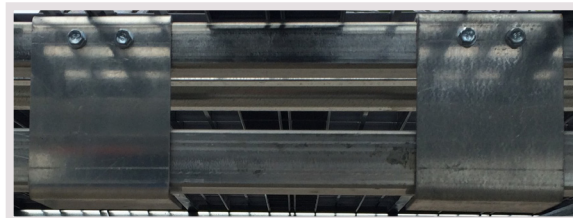
Expanded Metal Bench Top Sections



3/4in Wafer Tek Screws to be used for Attaching Expanded Metal Sections to the Bench Top Crossbar Supports (Hat Sections)



3/4in Tek Screws to be used to: Attach Aluminum Rails and Bench Top Crossbar Supports (Hat Sections), Aluminum Rails in Corners and Corner Protectors



Anti-Tip Brackets to be Mounted on 1" Square Anti-Tip Bracket Crossbar



Corner Protectors

NOTE: Please read through the instructions completely before starting!

WARNING: The hat sections as well as the other steel pieces can have very sharp edges. Take precautions when handling. Wear Gloves!

Step 1 of 15

Your parts will come in and look like the pictures below. Make sure all the necessary parts are there.



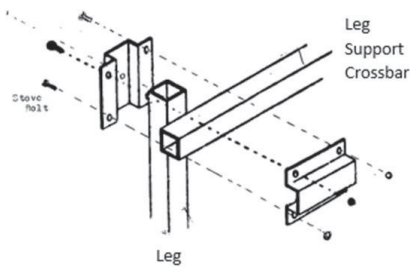
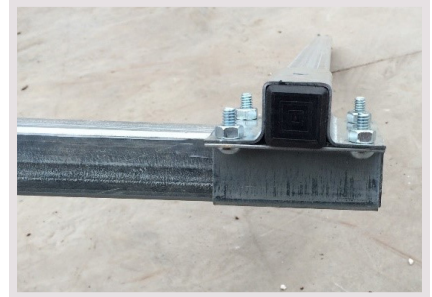
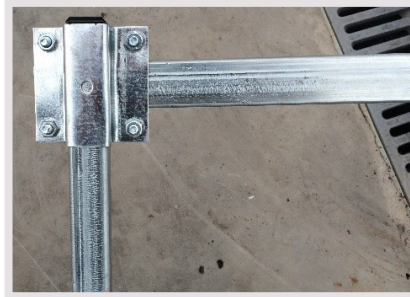
Step 2 of 15

Take 2 of the 30in Standard 1in Square Legs and put cap plugs in each end of the legs and attach 1 – 1in Square Clamp to each of the legs, anchor the clamp with a $\frac{3}{4}$ in TEK Screw.



Step 3 of 15

Take the 1 1/4in Square Leg Supports and put cap plugs in each end and attach each of them to 2 legs with 1 1/4in Square Clamps using the bolts and nuts provided as shown in the drawing below, anchor the clamps with a 3/4in TEK Screw.



Revisions	Adjustable 4 Bolt Clamp
1	

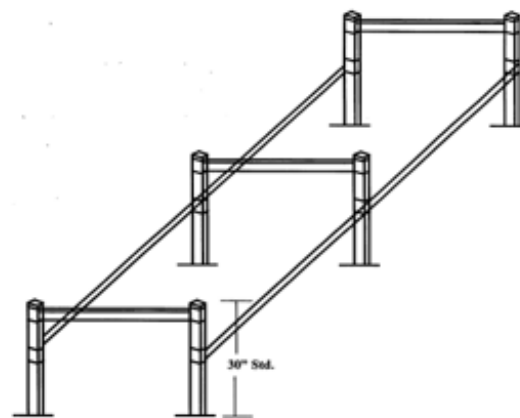


Step 4 of 15

Take 2 - 1in Square Clamps and using a 3/4in TEK Screw anchor them each to a leg in one set at the halfway point. Repeat step with other sets of legs. The leg sets for each end of the bench are set in 2ft from each end of the bench and then the others are spaced out as needed. Complete Leg Setup is shown in the drawing to the right.



Rolling Freestanding Legs



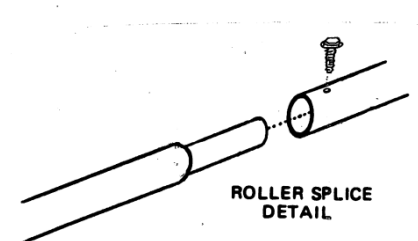
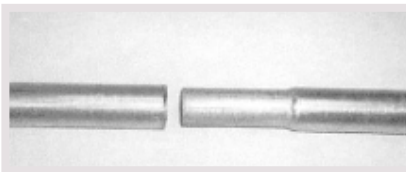
Step 5 of 15

Take 1 – 1.315in Round Clamp and attach it horizontally to the 1in Square Clamp on each leg that was put on in Step 4.



Step 6 of 15

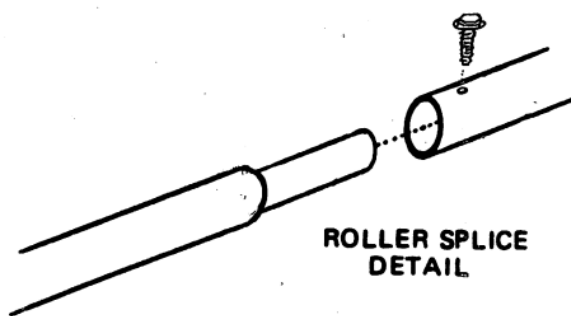
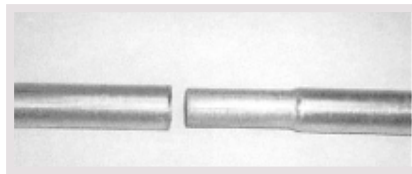
Take 2 of the 1.315in Round Tubing with round cap plugs in each end and put each end into one of the round clamps that was put on each leg in Step 5. These are the Support Rails. If the length of your bench is 12ft or less the Support Rail will be one piece. If it is longer than 12ft the Swage (male) end will need to be connected to the plain (female) end using a tek screw like in the picture and drawing to the right.



NOTE: We advise pre-drilling the female roller for the tek screw prior to assembly.

Step 7 of 15

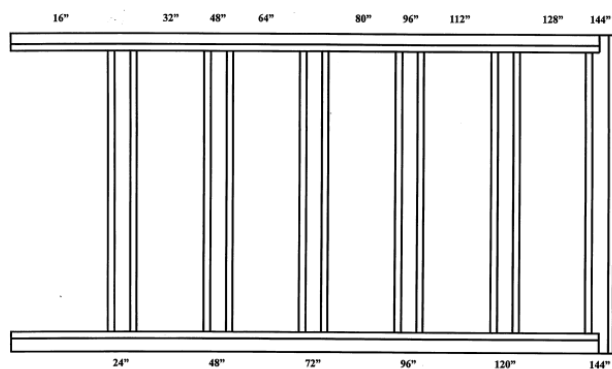
Take 2 of the 1.315in Round Tubing with round cap plugs in each end and put them across the Square Leg Supports. These are the Standard Rollers. If the length of your bench is 12ft or less the Standard Rollers will be one piece. If it is longer than 12ft the Swage (male) end will need to be connected to the plain (female) end using a tek screw like in the picture and drawing to the right.



NOTE: We advise pre-drilling the female roller for the tek screw prior to assembly.

Step 8 of 15

Take the Bench Top Crossbar Supports (Hat Sections) and place them across the Standard Rollers at 1.333ft or 16in on center.



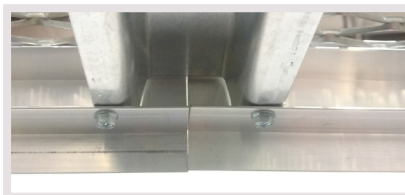
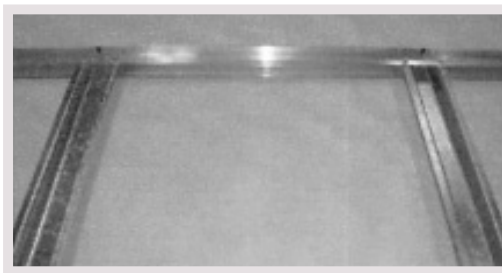
Standard bar spacing is 24"

NOTE: The end hat section is mounted 1/2 on and 1/2 off of the side rail.



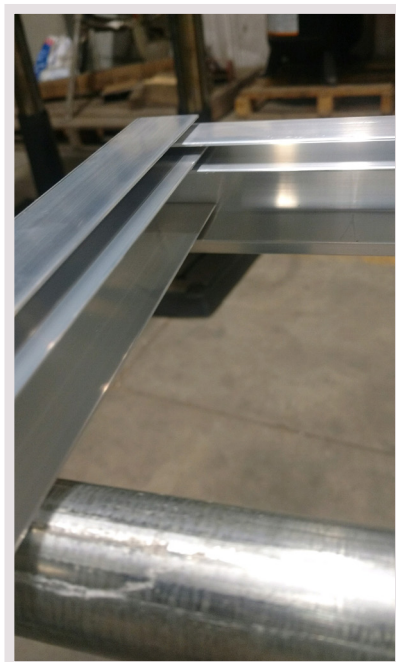
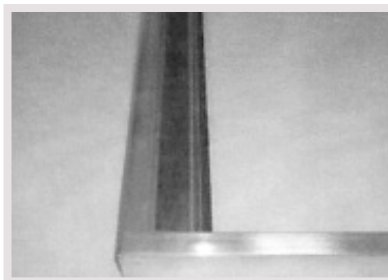
Step 9 of 15

Take the 2 pieces of Aluminum Rail Bench Top Side Trim and slide the Bench Top Crossbar Supports (Hat Sections) into them. Repeat this step with the other piece of Side Trim. Using a $\frac{3}{4}$ in TEK Screw from underneath, anchor each end of the Hat Sections to the Aluminum Rail. If splicing is required on Aluminum Side Rails, splices should not be directly opposite each other. Each end of the splice should be attached to a Hat Section as in the pictures to the right.



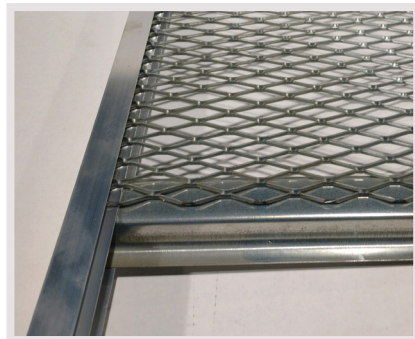
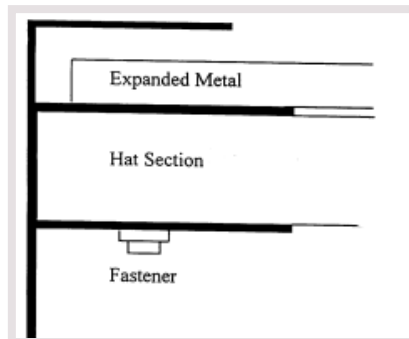
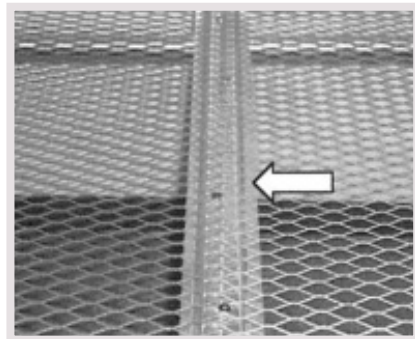
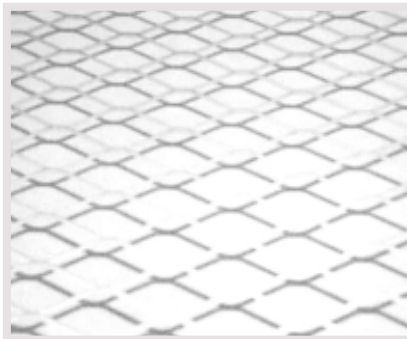
Step 10 of 15

The end Hat Sections should be positioned half on, half off the aluminum end rail as in the picture to the right. Take the 2 pieces of Aluminum Rail Bench Top End Trim and fit them together with the Side Trim. Then attach the 4 corners of the trim with $\frac{3}{4}$ in TEK Screws.



Step 11 of 15

Take the sections of Expanded Metal Bench Top and place them on top of the Hat Sections and Trim and anchor them using the $\frac{3}{4}$ in Wafer Tek Screws along the Bench Top Crossbar Supports (Hat Sections). Put the Expanded Metal and Hat Sections Together with the Aluminum Rail as shown in the picture to the right. On Expanded Metal the long way of the diamond goes the length of the bench.



Step 12 of 15

Take the 1in Square Anti-Tip Bracket Crossbar with cap plugs in each end and place it on top of the Standard Rollers and above the 1 1/4in Square Leg Support on one end of the bench. Attach it to the Aluminum Side Trim Rails using $\frac{3}{4}$ in TEK Screws. Repeat this step on the other end of the bench.

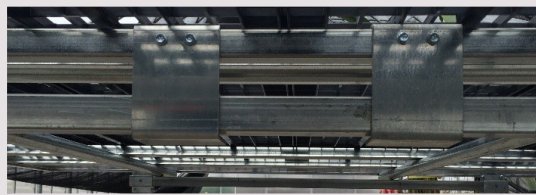
Note:

Picture shown is of ultra-plastic bench top instead of expanded metal bench top, same construction procedure though.

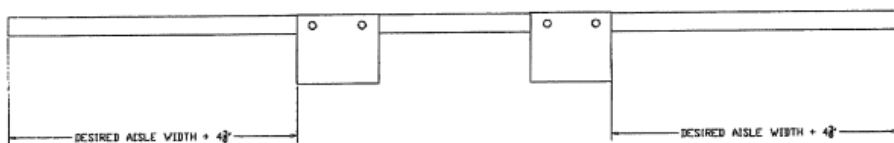


Step 13 of 15

Take the Anti-Tip Brackets and put each bracket over the 1 1/4in Square Leg Support and the 1in Square Anti-Tip Bracket Crossbar at each end of the bench. The measurement for the anti-tip brackets (as in the drawing on the right), from each edge of the bench goes in 4 3/8in. Space the anti-tip brackets 18in apart or per your quote. Using 2-3/4in TEK Screws, screw them each into the 1in Square Anti-Tip Bracket Crossbar as in the picture to the right.



ANTI-TIP CROSSPIECE

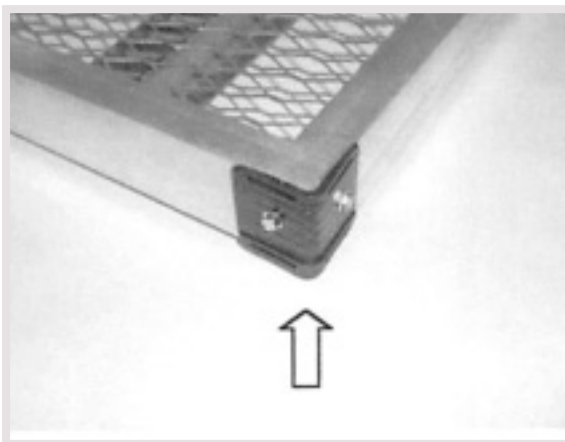


NOTES:

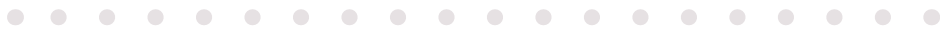
1. ATTACH ANTI-TIP CROSSPIECES TO 1"x1" SQUARE CROSSPIECES WITH TEK SCREWS
2. ALIGN INSIDE EDGE OF ANTI-TIP CROSSPIECE WITH INSIDE EDGE OF CROSSPIECE ON THE LEG ASSEMBLIES
3. SPACE THE ANTI-TIP ASSEMBLIES ABOUT 18' APART, OR AS YOU QUOTE

Step 14 of 15

Take the 4 Corner Protectors and attach them to the 4 corners of the Bench Rails using a 3/4in TEK Screw on each side.



Step 15 of 15



ALL DONE. The Bench should look like the picture below. If there are any questions about any of the above steps please call BFG Supply at 1-800-798-2891.

Note:

Picture shown does not
show expanded metal bench top.

