

FUNGAL LEAF SPOTS

Control Strategies



Background:

There are several types of Fungal Leaf Spots, the most common being Septoria, Alternaria, and Cercospora. They are all part of the ascomycetes group of fungi. They attack all different types of ornamentals including bedding plants, foliage, and woody crops.

Symptoms:

Spots can appear on the leaves, stems, or flowers depending on the fungi present. Many of the fungi can infect all 3 at the same time but none infect the roots or crown of a plant. The spots on the leaves usually infect the lower leaves first and then work their way up through the canopy. The spots are usually yellow spots that then turn brown to black. The spots can eventually kill an entire section of the leaf and as it continues the entire leaf will eventually die and fall off.

Favorable Development Conditions/Disease Cycle:

The conditions that are favorable for the development of Fungal Leaf Spots consists of humidity and leaf wetness. When it is humid inside the canopy and when the leaves are wet for a prolonged period is when Fungal Leaf Spots can appear. As for the disease cycle, most of the Leaf Spot Fungi have similar life cycles. They produce many spores that can be blown in the wind as well as splashed from leaf to leaf and plant to plant with water. Some of the fungi can also be seed borne.

Cultural Control:

Since prolonged leaf wetness encourages spore growth switching from overhead irrigation to drip irrigation would help. Only overhead irrigating in the morning so the plants have time to dry off before nightfall would also help. Reducing humidity inside the canopy would also help, this can be accomplished by some light pruning and by spacing plants farther apart to allow for better air circulation. When plants start showing symptoms, discarding them can help stop the spread of the disease as well.

Chemical Control:

There are several fungicides that are labeled and are effective for Fungal Leaf Spots.

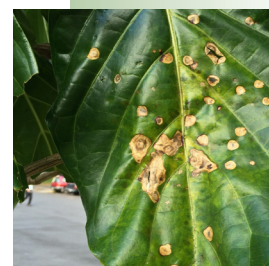


Always read and follow label directions before applying any pesticide and follow state and local regulations

See back for more information...

For more information or to place an order

Please contact your BFG Sales Representative or our Customer Service Team!





Palladium 2lb SYN38781



(Cyprodinil, Fludioxonil) Groups 9,12. Caution. 12hr REI. Rate: 2-4oz/100gal. Contact and Systemic. Labeled for use in the greenhouse and nursery. Do not use Palladium of leather leaf fern.



Eagle 20EW 16oz DOW173917 1gal DOW19-2505B



(Myclobutanil) Group 3. Caution. 24hr REI. Rate: 6-12oz/100gal. Systemic. Labeled for use in the greenhouse and nursery. Special directions for use on mums. Control may be enhanced with the addition of an adjuvant. Do not apply to Carrotwood.



Pageant Intrinsic 1lb BAS59012349 12lb BAS59012429



(Boscalid, Pyraclostrobin) Group 7,11. Caution. 12hr REI. Rate: 4-18oz/100gal. Contact. Labeled for use in the greenhouse and nursery as well as tomatoes.



Heritage 1lb SYN74240 6lb SYN74818



(Azoxystrobin) Group 11. Caution. 4hr REI. Rate: 1-8oz/100gal. Systemic. Labeled for use in the greenhouse and nursery as well as vegetables and herbs. Do not apply to crabapple, flowering cherry, leatherleaf fern or privet.



Spectro 90 WDG 5lb NTS10501045



(Chlorothalonil, Thiophanate methyl) Group M05, 1. Danger. 12hr REI. Rate: 1-2lb/100gal. Contact and Systemic. Labeled for use in the greenhouse and nursery. Do not use on Swedish Ivy, Boston Fern or Easter Cactus. Do not apply more than once to green or variegated Pittosporum or Schefflera.



Protect DF 6lb NTS10506660



(Mancozeb) Group M03. Caution. 24hr REI. Rate: 1-2lbs/100gal. Contact. Labeled for use in the greenhouse and nursery, including some vegetables. Control may be enhanced with the addition of an adjuvant. Do not use on Marigolds.



Chipco 26019 2lb OHP981462



(Iprodione) Group 2. Caution. 12hr REI. Rate: 1.0-2.5lbs/100gal. Contact. Labeled for use in the greenhouse and nursery. Do not use as a soil drench on Impatiens or Pothos. Do not use on Spathiphyllum.



OHP 6672 4.5F 2.5gal OHP986125



(Thiophanate methyl) Group 1. Caution. 12hr REI. Rate: 10-14.5oz/100gal. Systemic. Labeled for use in the greenhouse and nursery. Do not use on Swedish Ivy, Boston Fern or Easter Cactus.